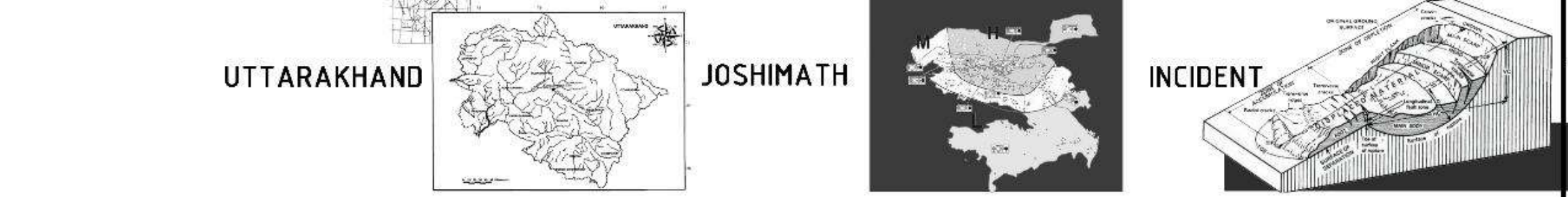


# JOSHIMATH UTOPIA

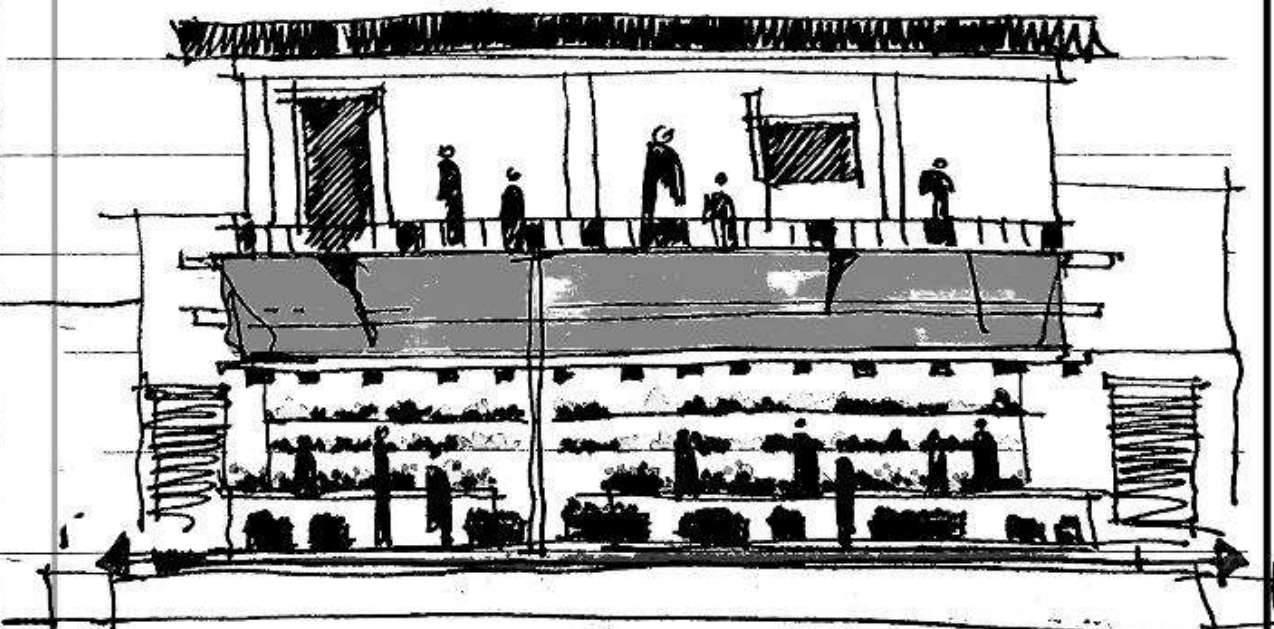
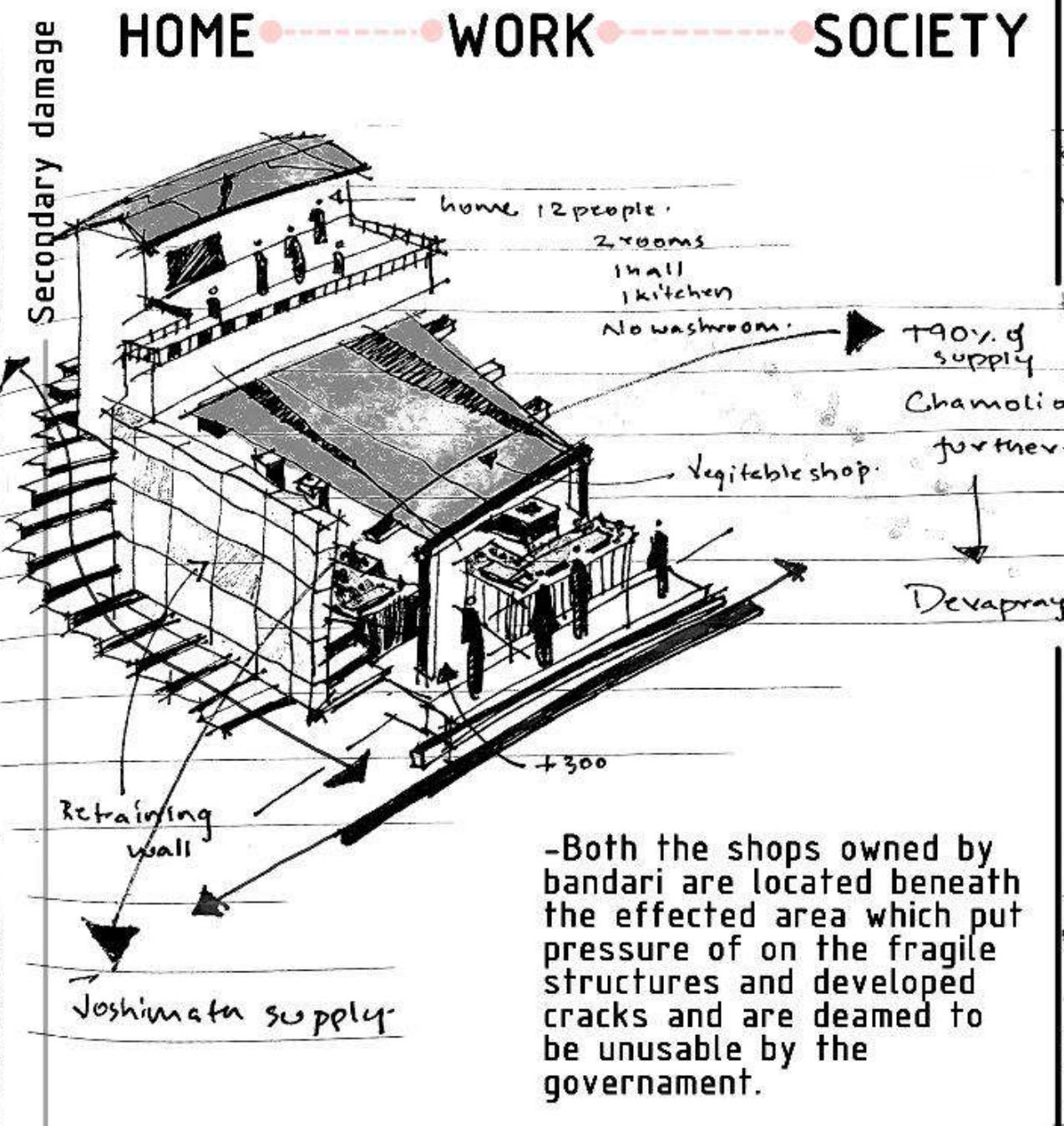
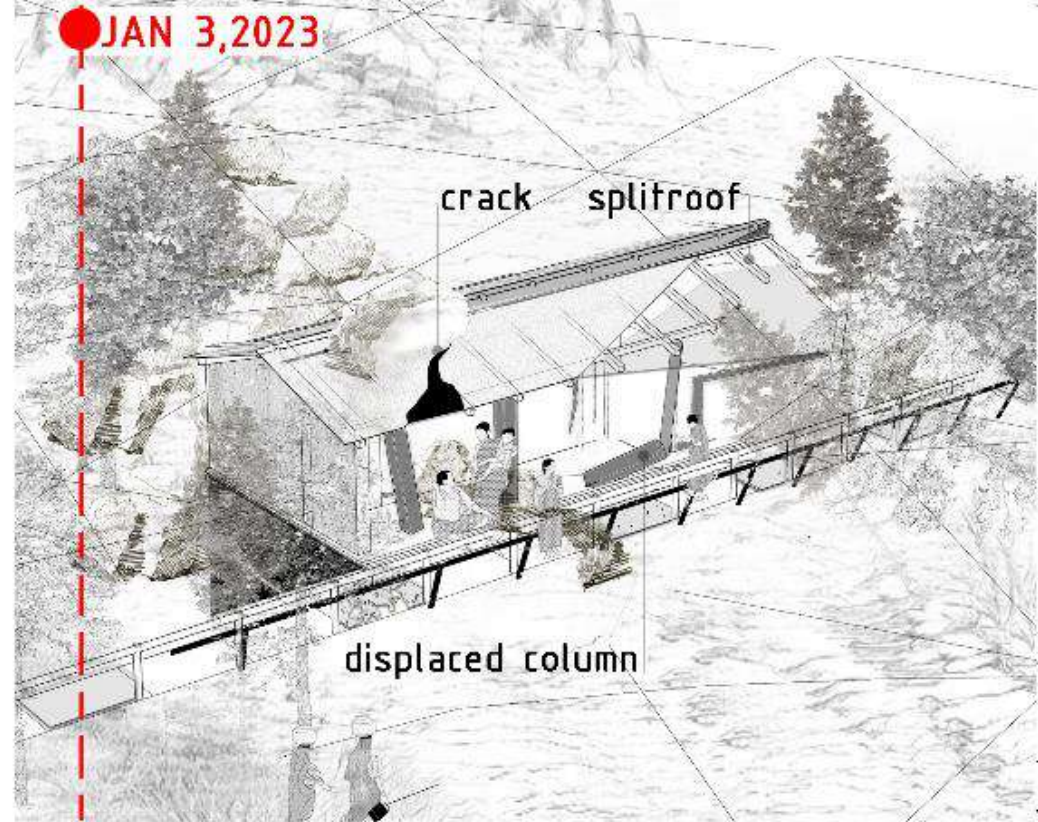


## FROM THE PERSPECTIVE OF MR. RAJENDRA BANDARI

### HIS LIFE

Occupation: Mr. Bandari is an vegetable vendor. he owns 2 of 3 vegetable stores in upper bazar

His family was effected directly from the land sliding of joshimath on 2nd jan 2023, the family wokeup to the cracking sound of their house in the middle of the night



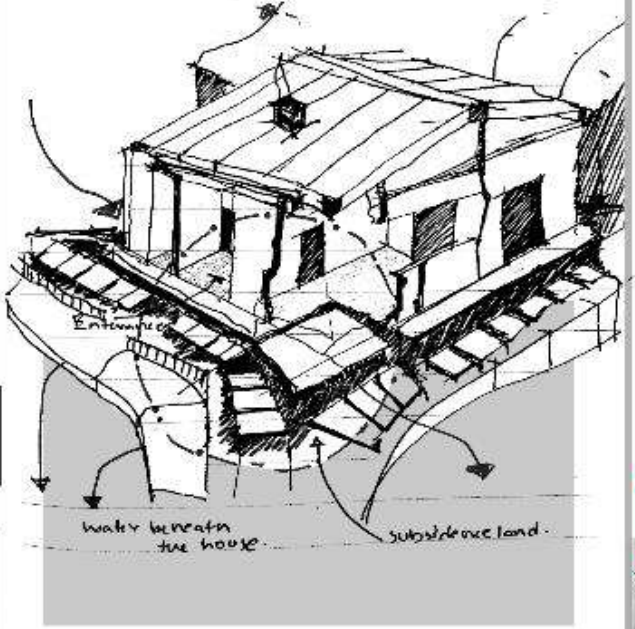
ARE THERE NO PROBLEMS BEFORE?

land sliding seals off access to joshimath few times a year and extreme winter cuts the access to the town for 4 months (conservative estimate). so access to fresh food is often difficult and is expensive

Use of cold storage is common in the city to have a study supply of food to 70,000 population

farming is limited in the town and clearing of land for farms is restricted

### HOUSING

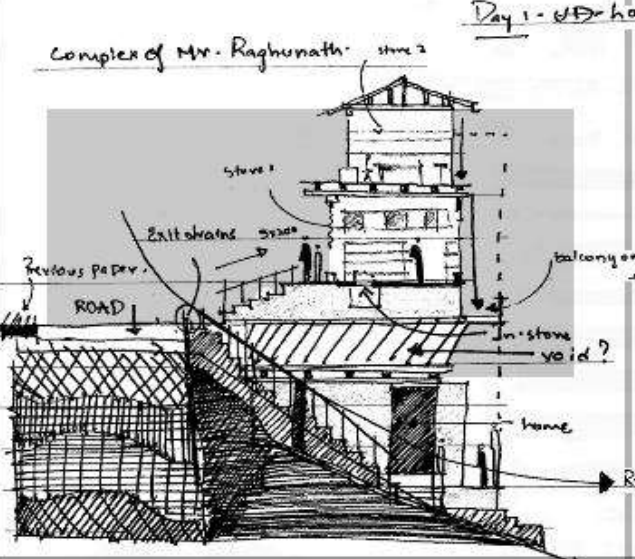
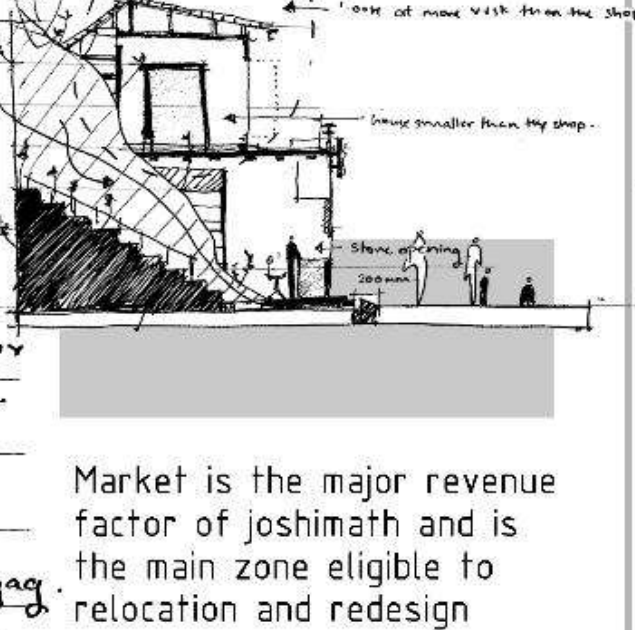


Estimated 25000 people are face the same fate in joshimath (6250 families)

-housing reguvination can solve initial layer of incident

-housing assoicated to market are 5000

### MOVEMENT



### PERCEPTION OF INCIDENT

INFERENCE OF PEOPLE PERCEPTION

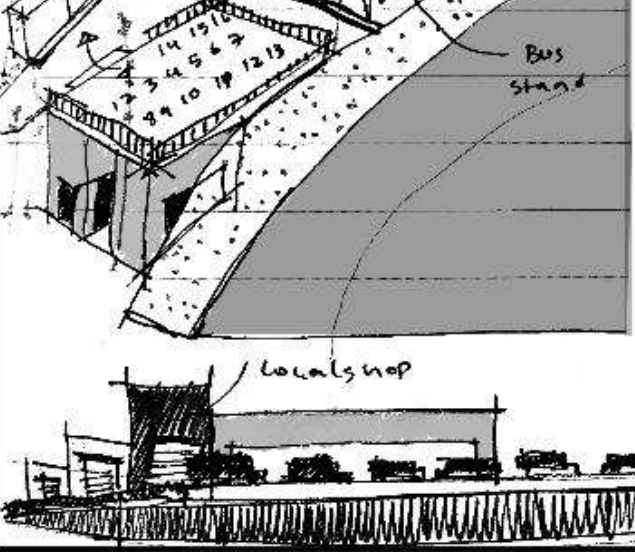
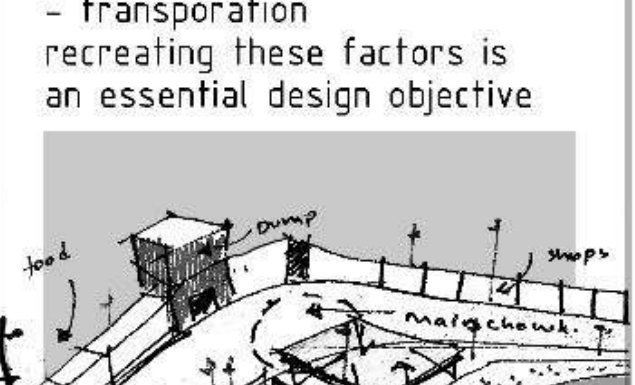
Source: crowd survey

- Model of tourism highly depend on transportation because of challenging terrain and limited facilities.

-Zones get created highly based on the parking area of thufans and tourist cars.

-Factor that exagurates this factor is how the movement between residential and main street works

-Due to all the hotspots existing in red zone replication will channel all the revenue



### PERCEPTION OF INCIDENT

INFERENCE OF PEOPLE PERCEPTION

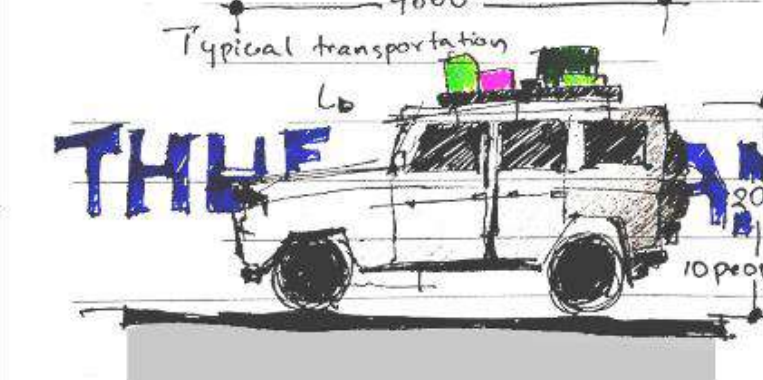
Source: crowd survey

- Model of tourism highly depend on transportation because of challenging terrain and limited facilities.

-Zones get created highly based on the parking area of thufans and tourist cars.

-Factor that exagurates this factor is how the movement between residential and main street works

-Due to all the hotspots existing in red zone replication will channel all the revenue



MR. RAJENDRA BANDARI's house

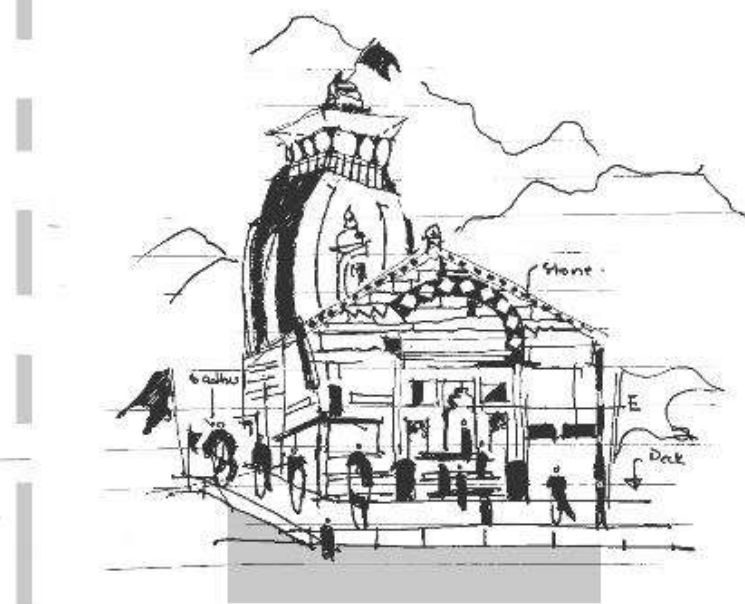


### PERCEPTION OF INCIDENT

INFERENCE OF RELIGIOUS PERCEPTION

Source: crowd survey

-Although temple exists in the red zone its unique corridor helps it to be stable which is seen as a miracle by the locals and tourists and it acts as a defacto relief area



upper bazar



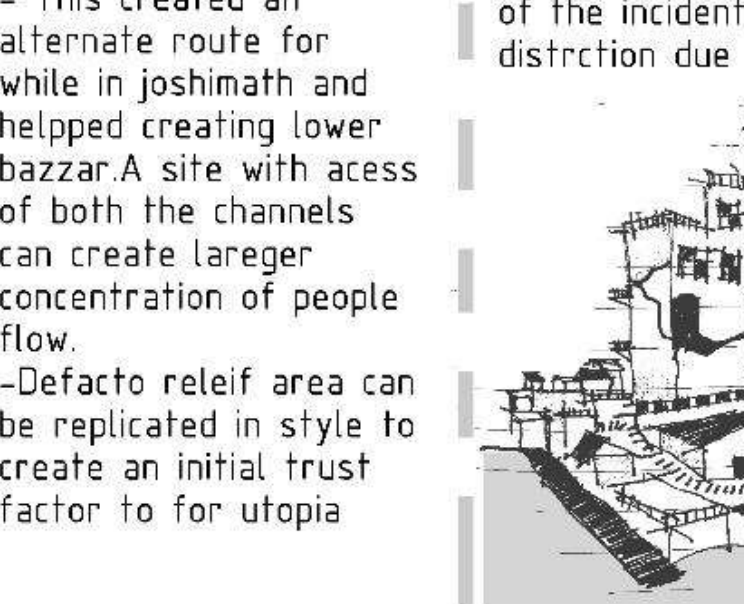
### PERCEPTION OF INCIDENT

INFERENCE OF MODELED PERCEPTION

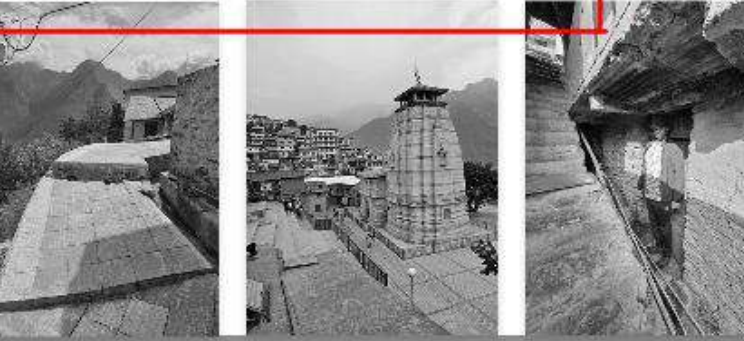
Source: IIT ropar report

-2016 IIT report identified the threat due to excessive concentration of massive structures due non existing guidelines in joshimath

-Breaking of hotel Mountain view determind the start of the incident which cascaded into larger scale distriction due to NTPC project



temple



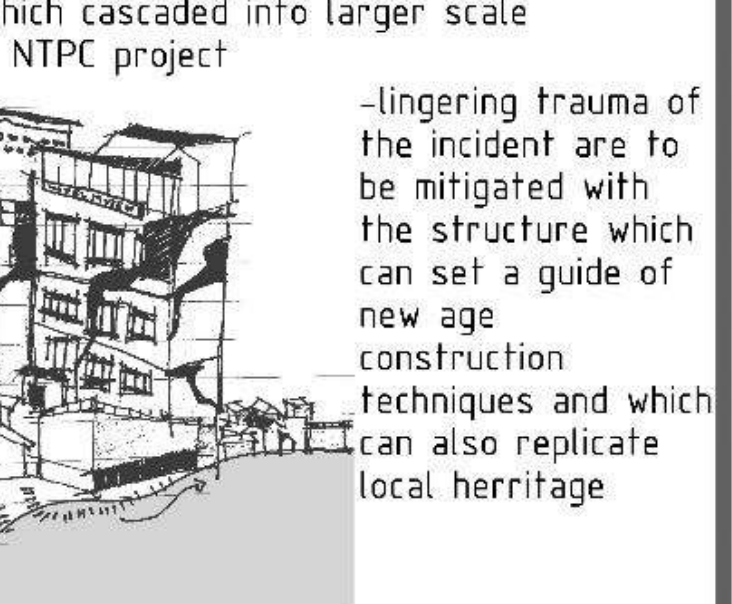
### PERCEPTION OF INCIDENT

INFERENCE OF MODELED PERCEPTION

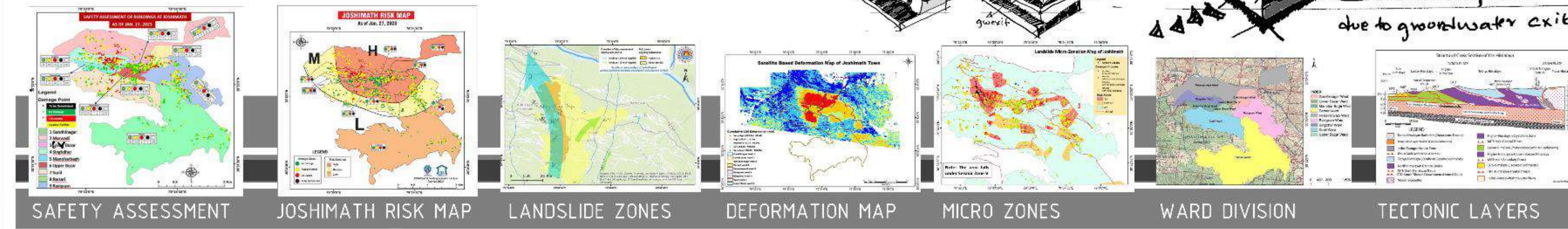
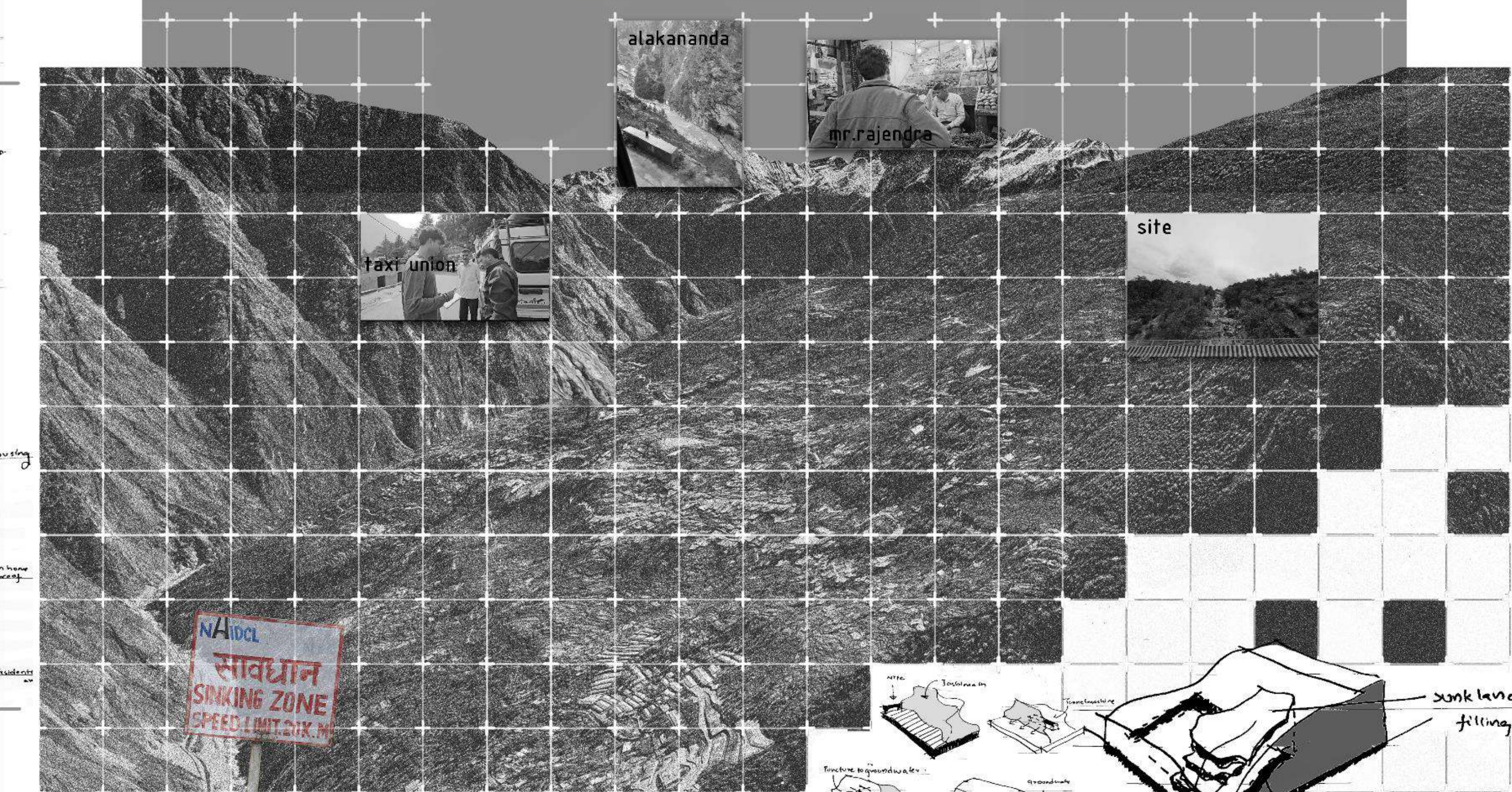
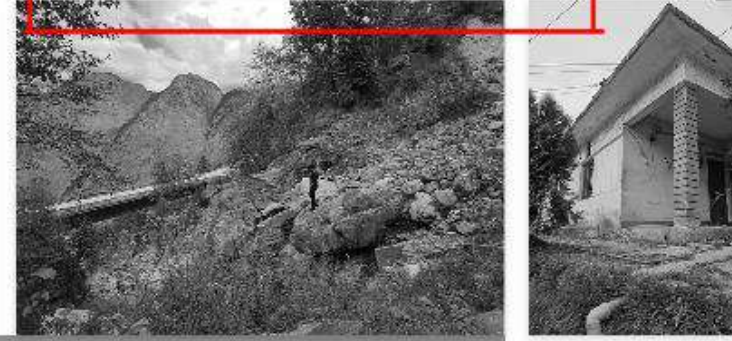
Source: IIT ropar report

-2016 IIT report identified the threat due to excessive concentration of massive structures due non existing guidelines in joshimath

-Breaking of hotel Mountain view determind the start of the incident which cascaded into larger scale distriction due to NTPC project



site



Objective: By analysing all the solutions proposed by the government and considering peoples aggitation a singular solution of providing a relief center or re-construction of housing is not enough to solve the problem

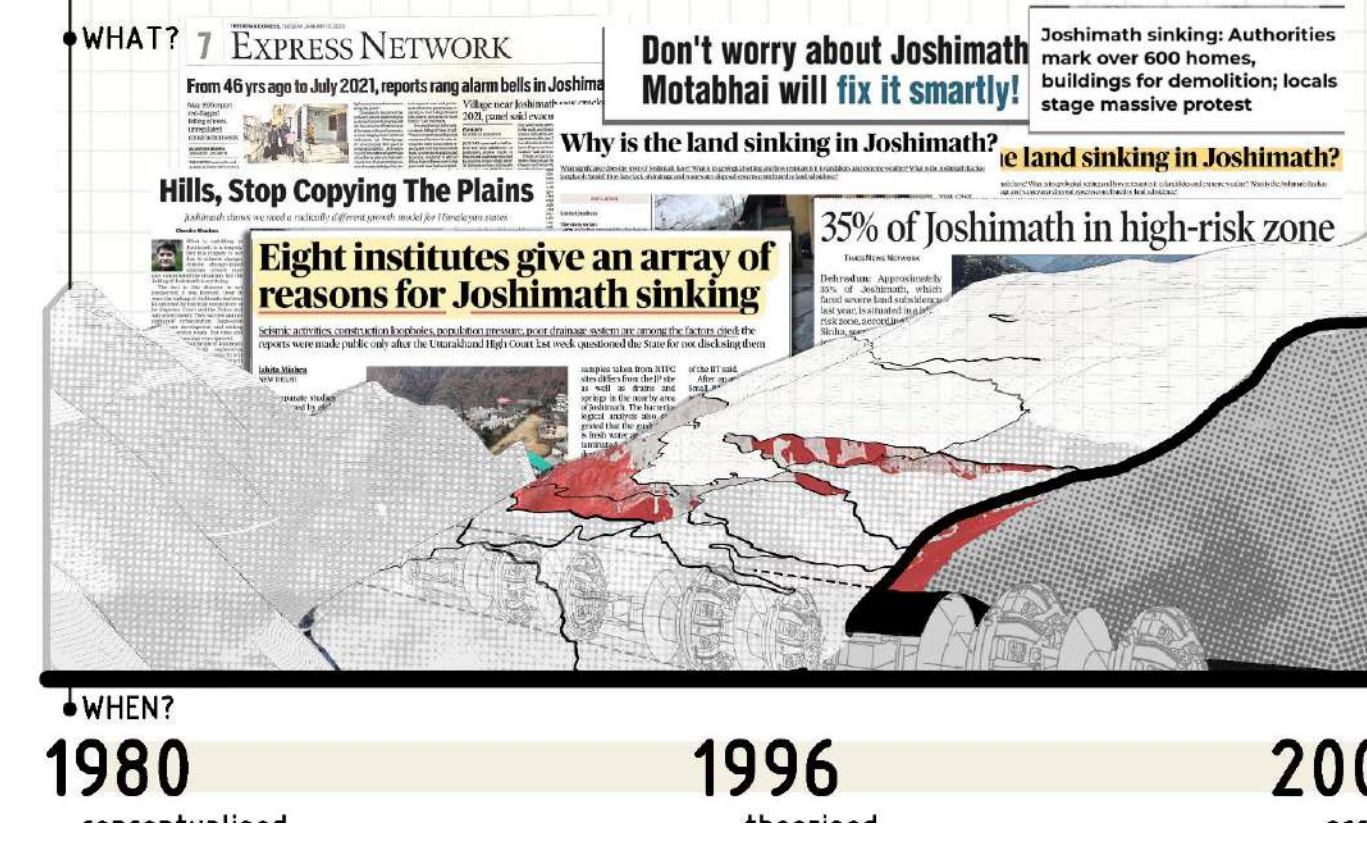
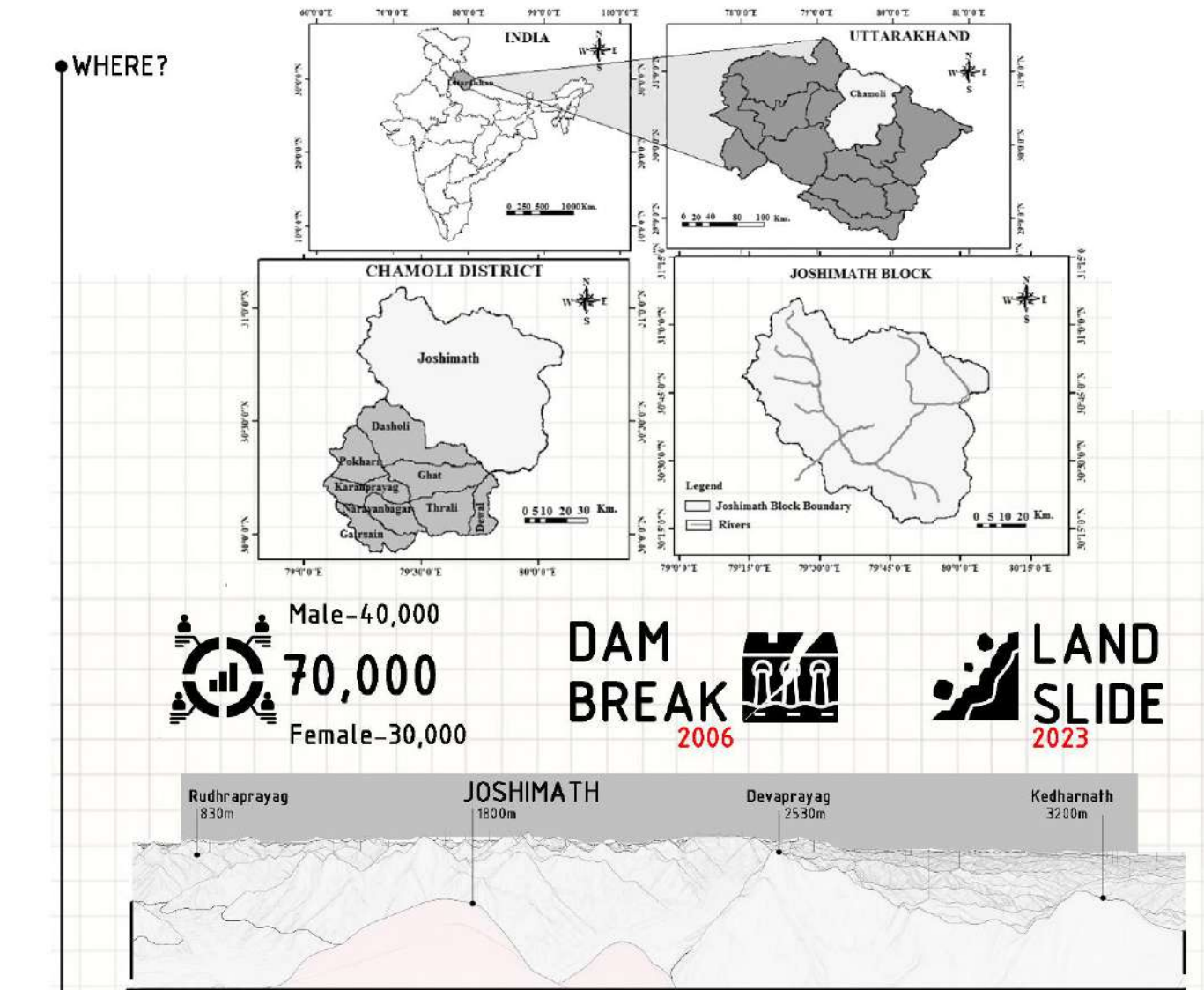
If not the proposed solutions the objective turns into creation of an utopia with market housing and horticulture zones to create a circle of life that all utopias aim to create.

JOSHIMATHS UTOPIA will aim to create an urban scale mix use resilient structure which will be a seed for germination of a new city with the structure as the central unit.



# JOSHIMATH

SEARCHING AN ANSWER FOR:  
CAN IT BE SAVED? WILL PEOPLE GET THEIR HOMES BACK?

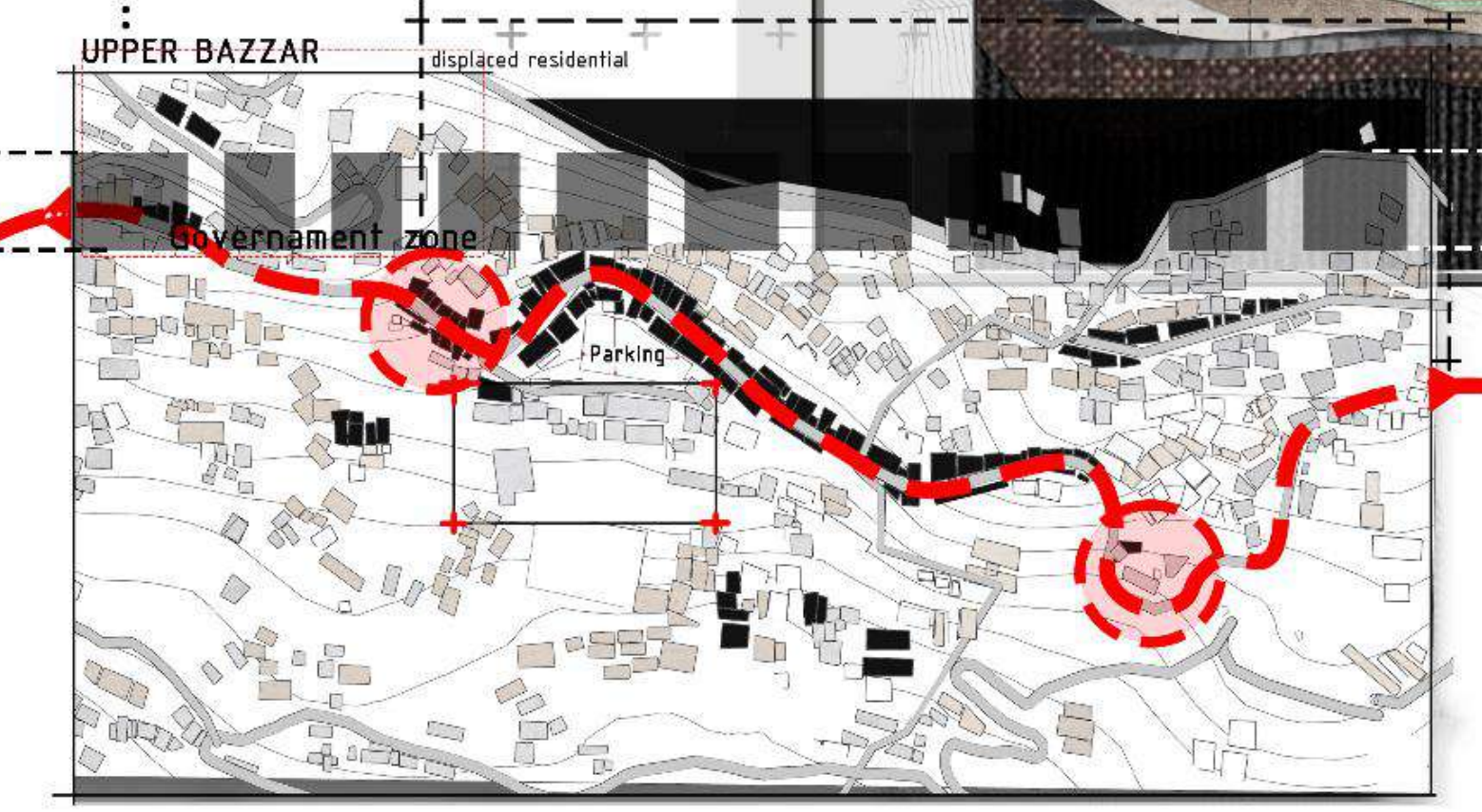
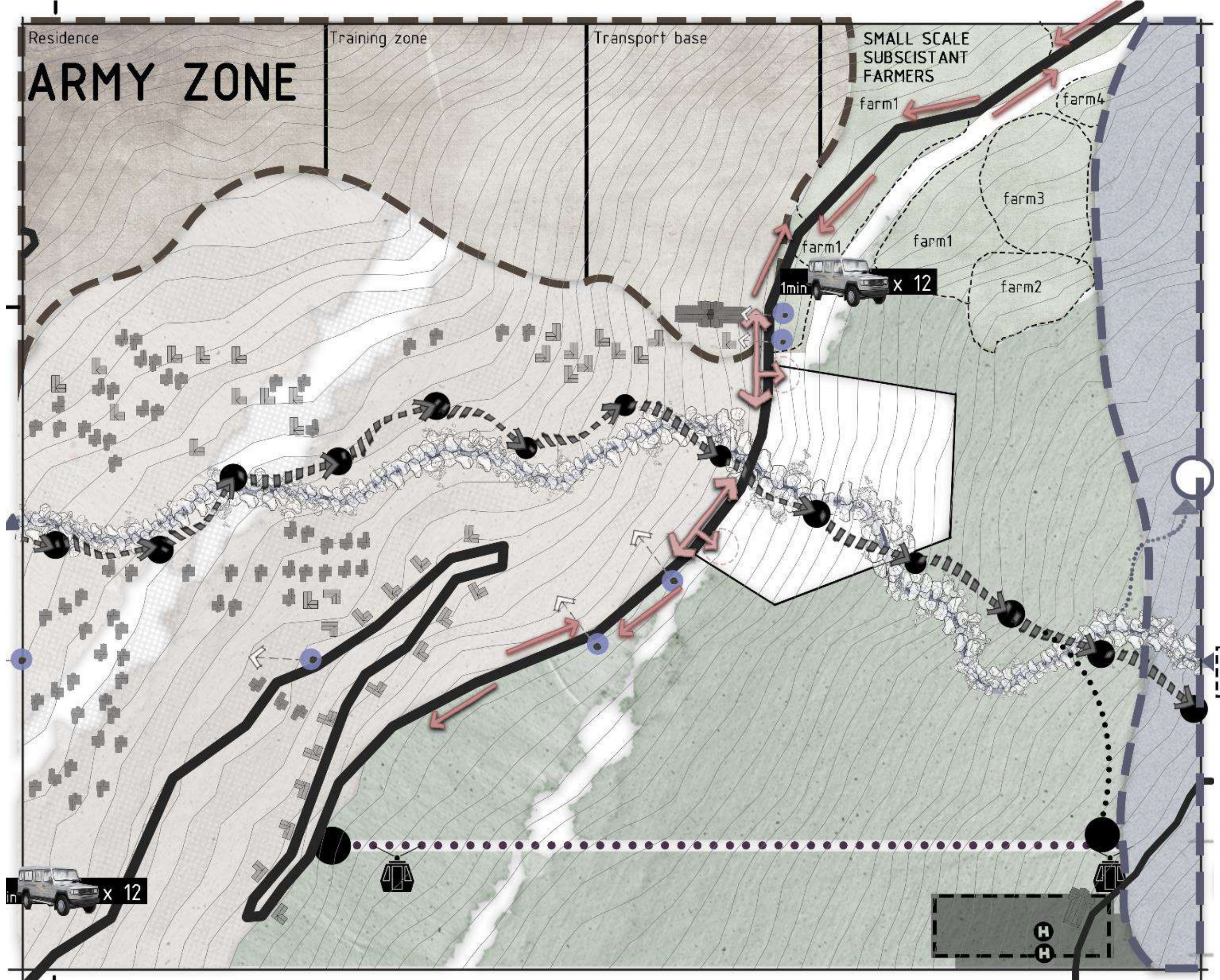
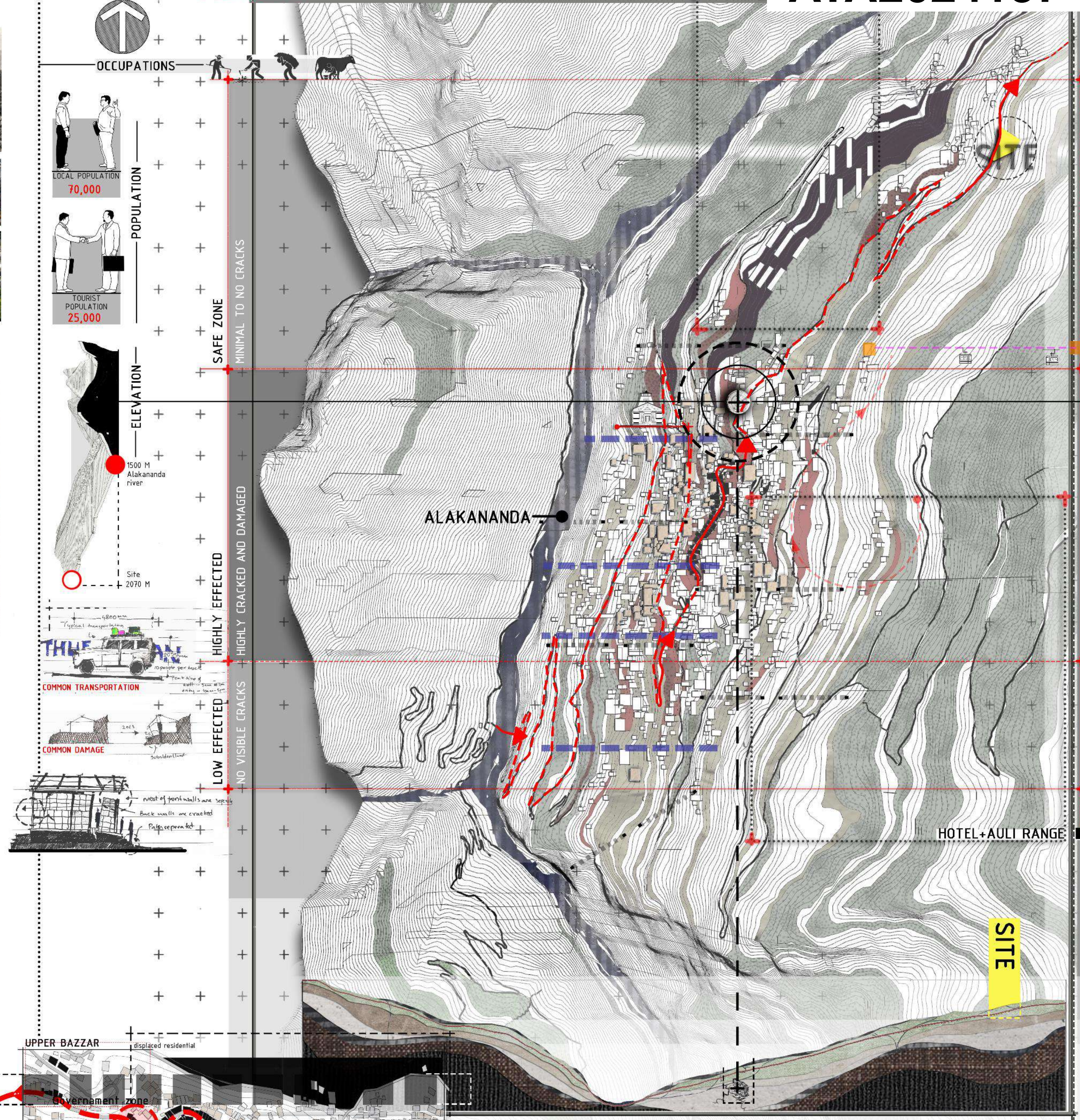


## PROBLEM STATEMENT

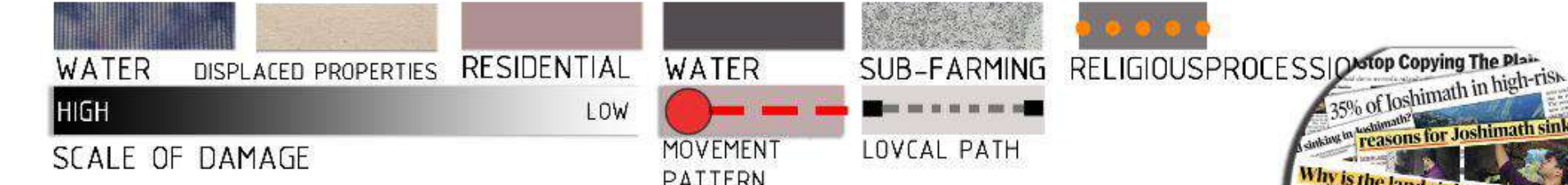


## KEY MAP-JOSHIMATH TO DEVAPRAYAG

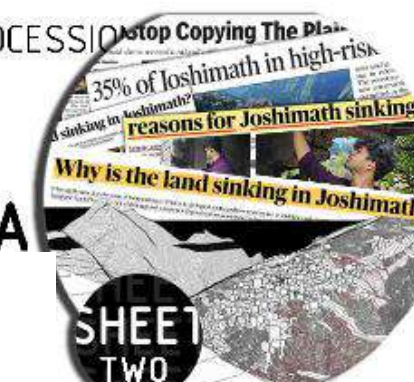
ENTPC



## LEGEND :



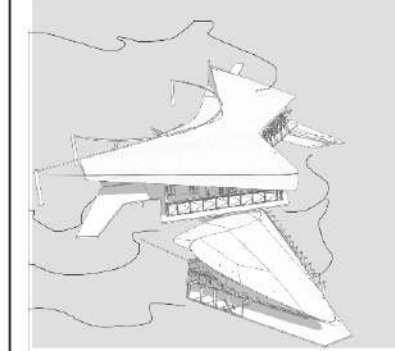
## JOSHIMATH'S UTOPIA





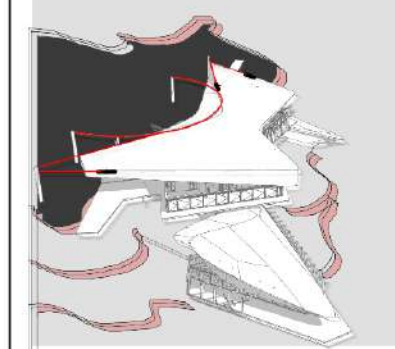


#### LEVEL 1



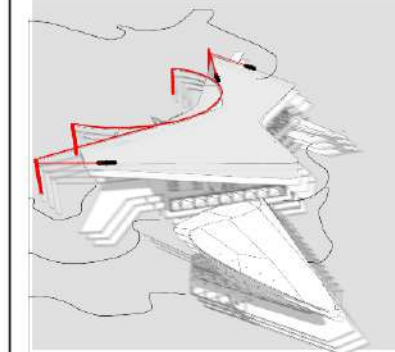
level one land sliding can be restrained by the retaining walls and foundations without affecting the structure

#### LEVEL 2



level two land sliding tensions the wires but the load of the structure will still remain majorly on columns through trusses

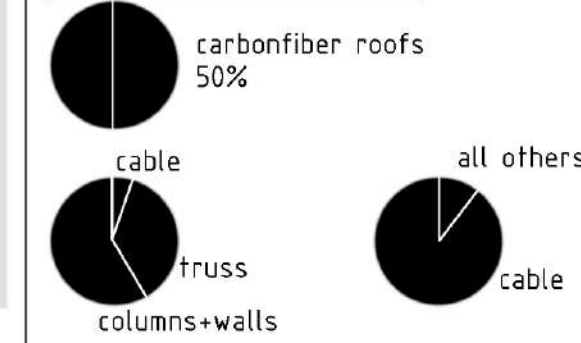
#### LEVEL 3



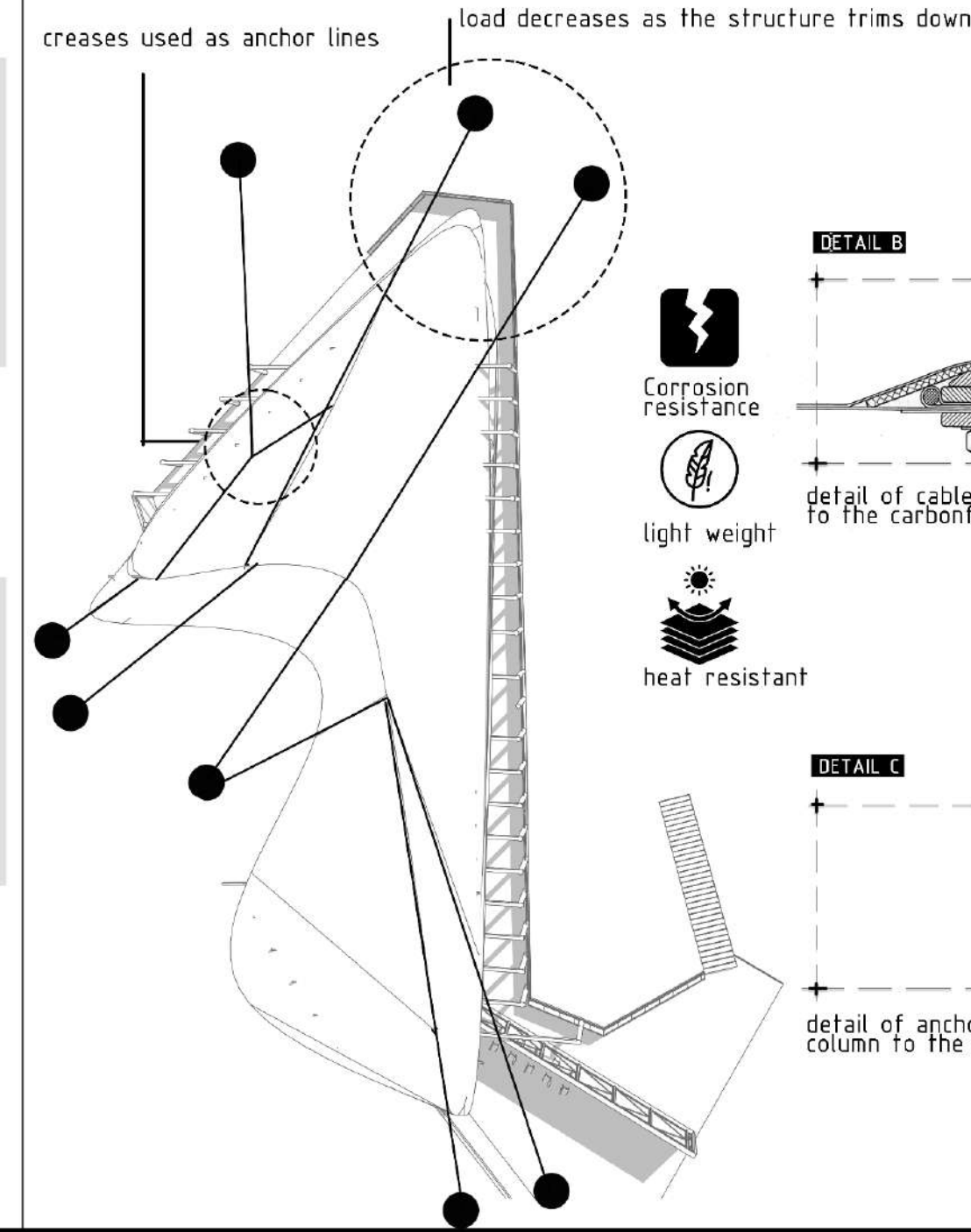
when more the 8cm land is displaced the cables take over the total load of the roof detaching it from the walls and trusses so that evacuation will be given ample time and save human lives.

with this method since the roofs are secure rebuild can be executed faster

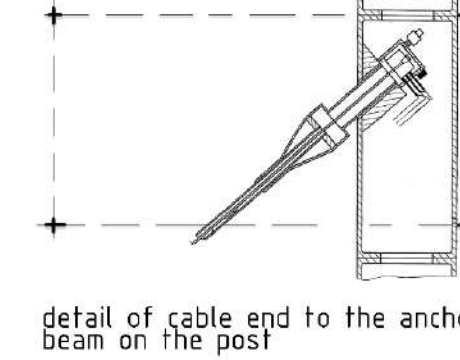
#### TYPES OF MATERIAL ROOFS



#### LOAD DISTRIBUTION CHANGE IN CASE OF SLIDING

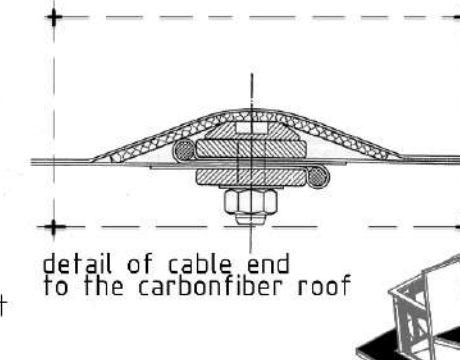


#### DETAIL A



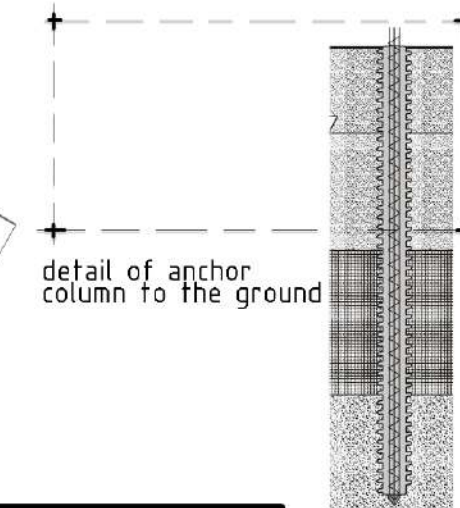
detail of cable end to the anchor beam on the post

#### DETAIL B

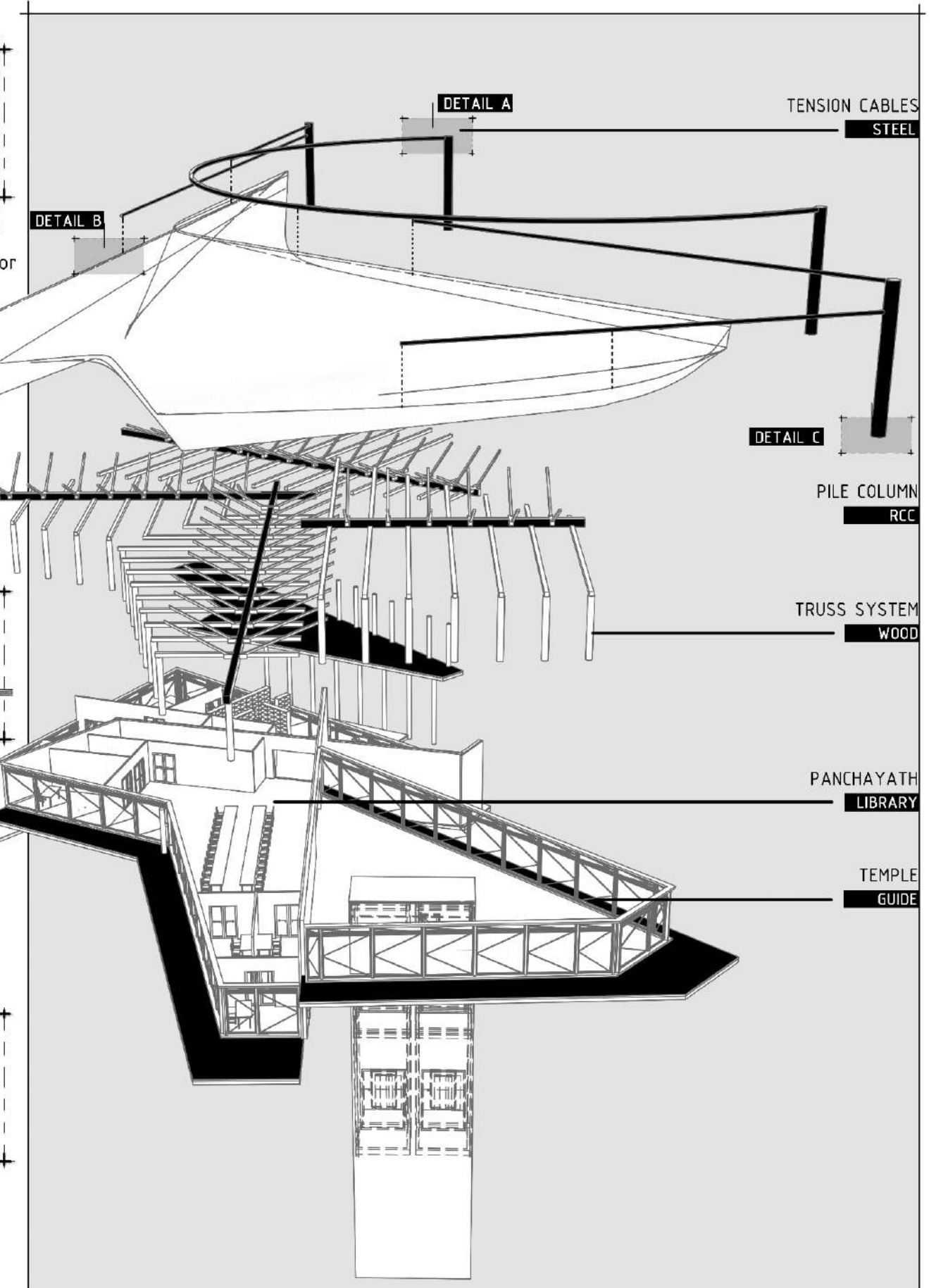


detail of cable end to the carbonfiber roof

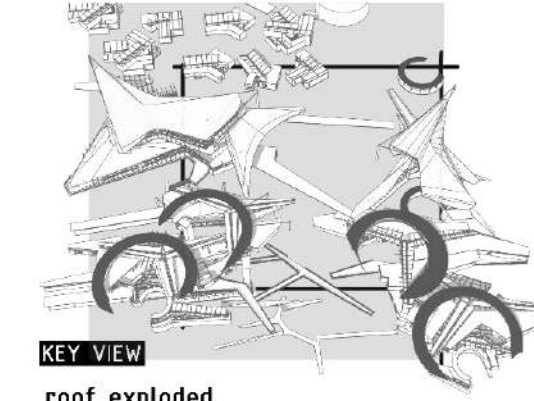
#### DETAIL C



detail of anchor column to the ground

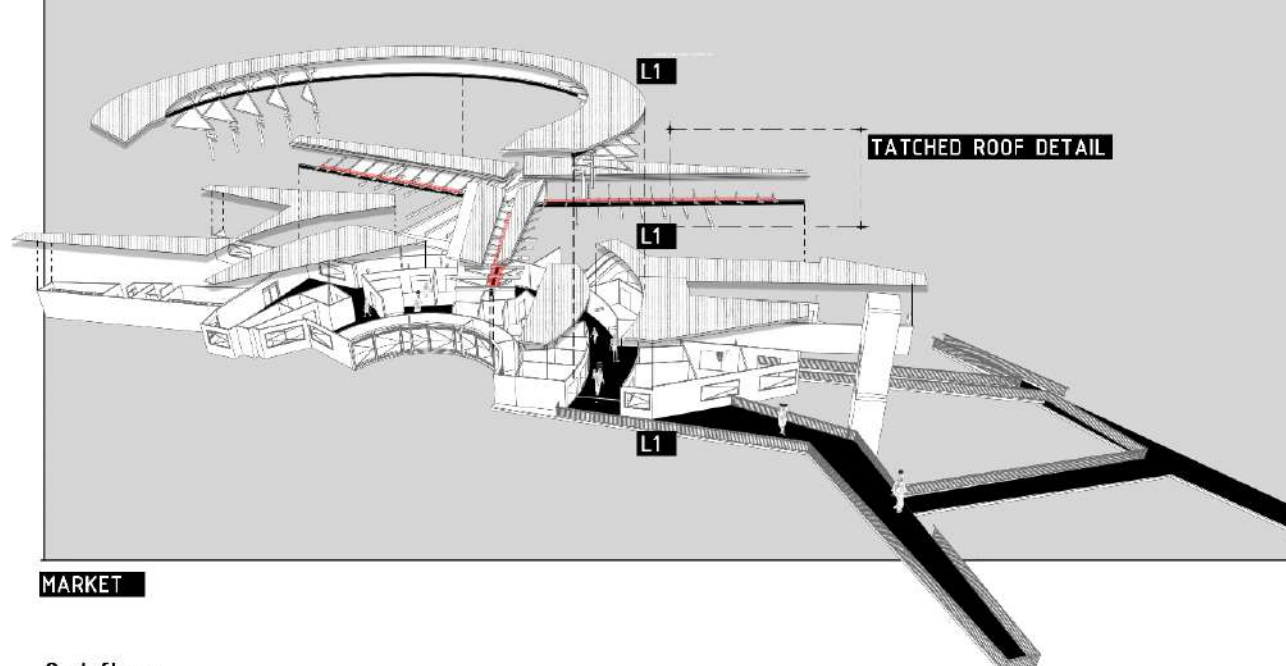


#### key view

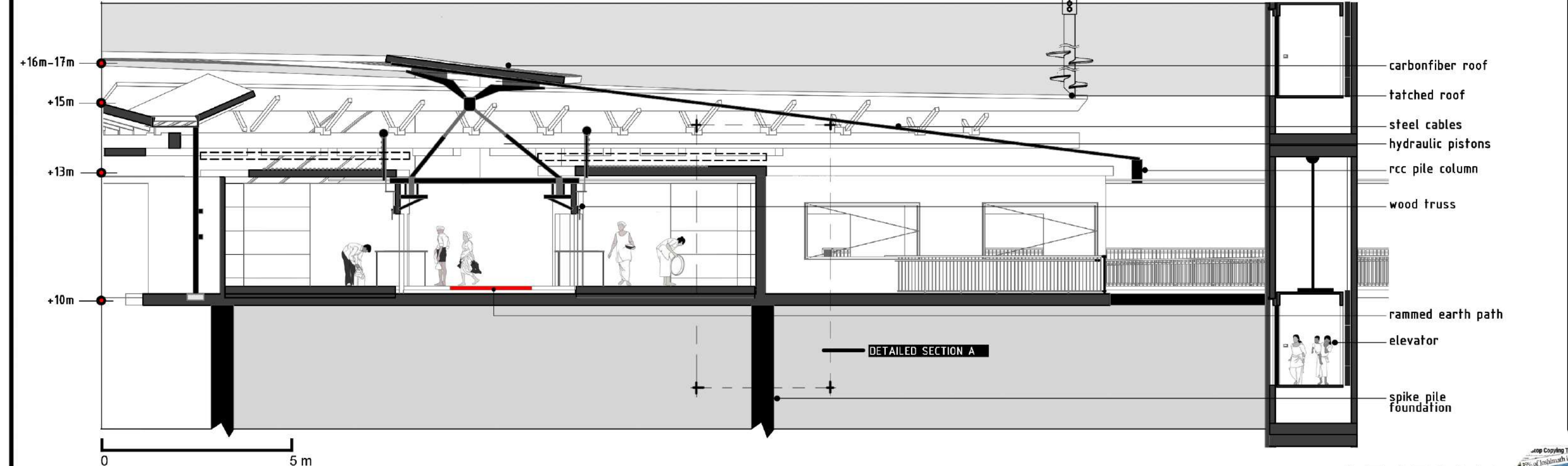


#### KEY VIEW

#### roof exploded



#### 2nd floor



#### SECTION

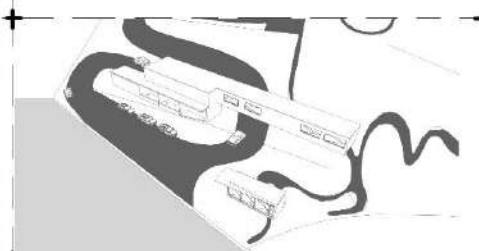






DRIVE THROUGH:

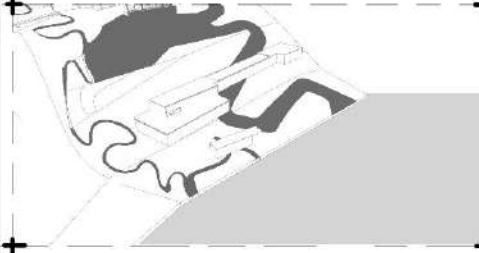
PROVIDES A PIT STOP FOR PILLIGRAMS  
THAT USE JOSHIMATH AS A PIT STOP IN  
ON THE WAY TO KEDARNATH OR AULL.  
IT MAKES USE OF SMALLER  
INSTALLEMENTS TO MAKE THE  
STRUCTURE FAMILIAR TO NEW TOURISTS



## SOCIAL FEATURE 2

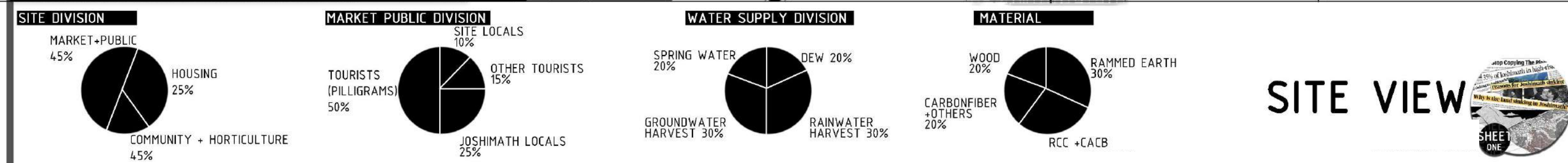
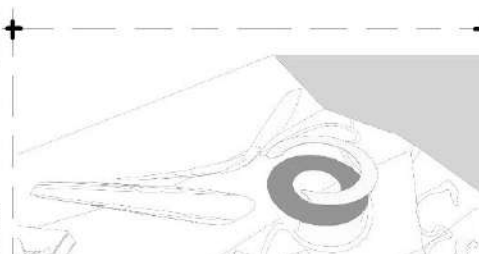
WATER SUPPLY:

SINCE THE SITE PRODUCES EXCESS WATER THROUGH VARIOUS MEANS A FREE WATER SUPPLY FOR PEOPLE OF JOSHIMATH CAN BE CREATED AS AN OUTPOST TO GIVE BACK TO THE COMMUNITY



### SOCIAL FEATURE 3

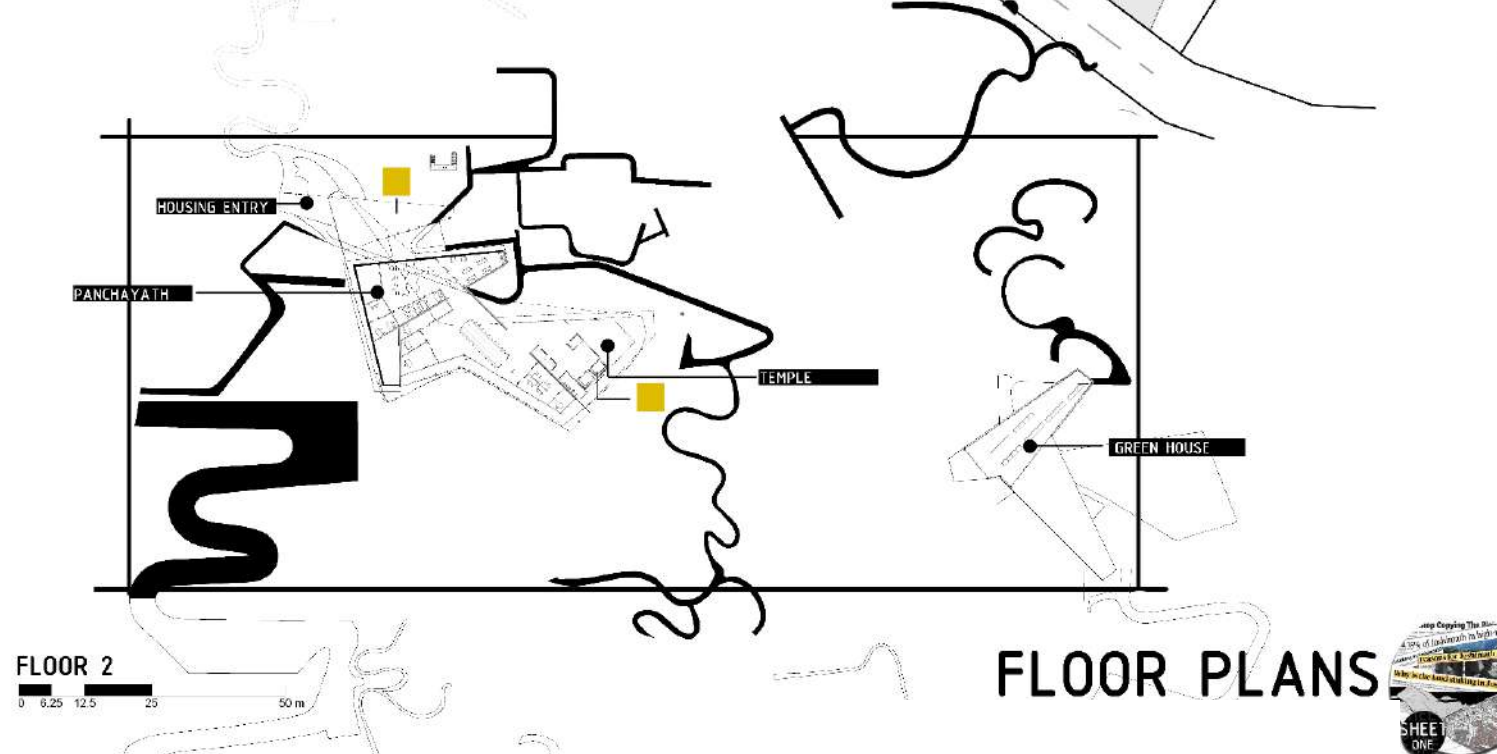
FAMILIAR SOCIAL PATTERNS SUCH AS REARING COWS AND BON FIRE ARE CREATED TO STENGTHEN HUMAN BOND TO THE LAND



## SITE VIEW



0	6.25	12.5	2
---	------	------	---



## FLOOR PLANS

