

21ARC76

INTERIOR DESIGN

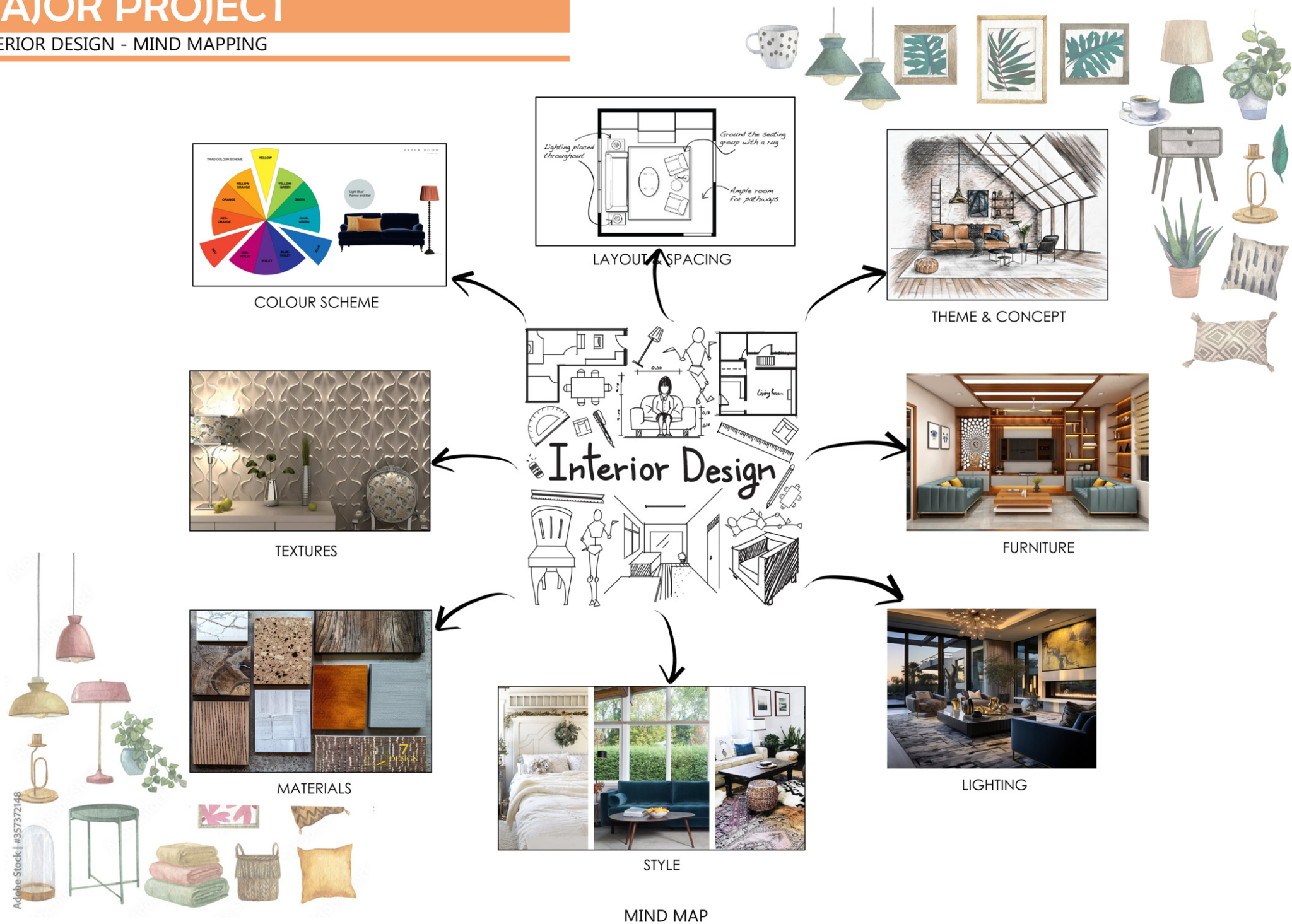
NAME: BIPIN ACHAPPA N M
USN: 1AA21AT012
SEM: 7TH SEM
COLLEGE: ANRVSA

INDEX

SL.NO	TITLE
1	INTERIOR DESIGN MIND MAPPING
2	KIDS BEDROOM DESIGN
3	LITERATURE CASE STUDY
4	PHYSICAL CASE STUDY
5	THEME SHEET
6	ZONING AND FLOOR PLAN
7	FURNITURE LAYOUT
8	WORKING DRAWING PLAN
9	SECTIONAL ELEVATION 1
10	SECTIONAL ELEVATION 2
11	ELECTRICAL LAYOUT & FALSE CEILING
12	3D RENDERED VIEWS
13	MINOR PROJECT - KITCHEN DESIGN
14	MINOR PROJECT - WARDROBE DESIGN

MAJOR PROJECT

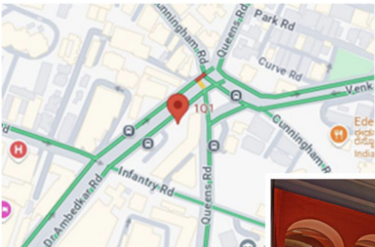
INTERIOR DESIGN - MIND MAPPING



MAJOR PROJECT

PHYSICAL CASE STUDY

1Q1 KITCHEN AND BAR



SITE:

1Q1 KITCHEN & BAR IS LOCATED AT THE HEART OF BENGALURU IN THE QUEEN'S ROAD AREA. INSIDE A HISTORIC, COLONIAL-ERA BUILDING.



HERITAGE CONTEXT:

THE BUILDING WAS ORIGINALLY DESIGNED DURING THE BRITISH COLONIAL PERIOD AND REFLECTS INFLUENCES OF COLONIAL ARCHITECTURE, CHARACTERIZED BY HIGH CEILINGS, LARGE WINDOWS, AND EXTENSIVE USE OF NATURAL MATERIALS LIKE WOOD AND STONE. THE STRUCTURE'S HISTORICAL SIGNIFICANCE POSED BOTH OPPORTUNITIES AND CHALLENGES FOR THE DESIGN TEAM.

ARCHITECTURAL ELEMENTS:

OPEN FLOOR PLAN: THE SPACE IS DESIGNED TO BE OPEN AND AIRY, WITH SEAMLESS TRANSITIONS BETWEEN THE INDOOR DINING AREAS, BAR, AND OUTDOOR SEATING. THIS OPEN-PLAN APPROACH WAS CRUCIAL TO MAKING THE SPACE FEEL LARGER AND MORE DYNAMIC WHILE ACCOMMODATING VARIOUS FUNCTIONS, INCLUDING FINE DINING, CASUAL DRINKS, AND LIVE PERFORMANCES



1Q1 KITCHEN & BAR, BANGALORE

GROUND FLOOR PLAN

KHOSLA ASSOCIATES

COLONIAL INFLUENCE: THE BUILDING'S ORIGINAL COLONIAL FEATURES, SUCH AS LARGE ARCHED WINDOWS, HIGH CEILINGS, AND WOODEN FLOORING, HAVE BEEN PRESERVED AND HIGHLIGHTED IN THE DESIGN. THE COLONIAL-ERA PILLARS AND INTRICATE MOLDING HAVE ALSO BEEN RESTORED TO SHOWCASE THE BUILDING'S HISTORY.

ART DECO INFLUENCE: THE INTERIORS DRAW INSPIRATION FROM ART DECO DESIGN, PARTICULARLY IN THE USE OF GEOMETRIC PATTERNS, SYMMETRY, AND MATERIALS. ART DECO ELEMENTS SUCH AS METAL ACCENTS, BOLD LINES, AND SLEEK FURNISHINGS BLEND HARMONIOUSLY WITH THE COLONIAL BACKDROP.

MATERIAL PALETTE:

RESTORED ELEMENTS: THE ORIGINAL WOODWORK, INCLUDING THE FLOORING AND WINDOW FRAMES, WAS RESTORED, ADDING WARMTH AND HISTORICAL TEXTURE TO THE SPACE. THE DARK, POLISHED WOOD CONTRASTS WITH THE LIGHT WALLS AND HIGH CEILINGS, CREATING A DRAMATIC BUT WELCOMING ATMOSPHERE.

METAL AND GLASS: TO INTRODUCE A CONTEMPORARY FEEL, METAL FIXTURES AND GLASS PARTITIONS WERE USED EXTENSIVELY. THESE MODERN MATERIALS COMPLEMENT THE HEAVY COLONIAL WOODWORK AND BRING A SENSE OF LIGHTNESS AND TRANSPARENCY TO THE DESIGN.

LIGHTING AND TEXTURES: SOFT LIGHTING, CUSTOM-DESIGNED CHANDELIERS, AND SUBTLE GOLD ACCENTS ENHANCE THE ART DECO-INSPIRED INTERIORS. TEXTURED FABRICS, PLUSH UPHOLSTERY, AND MARBLE SURFACES ARE USED TO ADD RICHNESS AND LUXURY TO THE SPACE, BALANCING THE BUILDING'S OLD-WORLD CHARM WITH A CONTEMPORARY EDGE

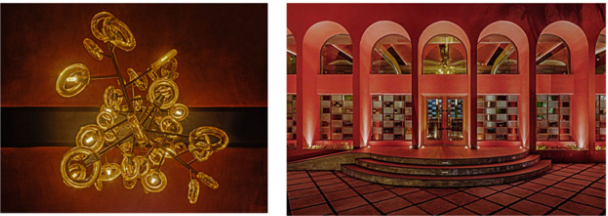
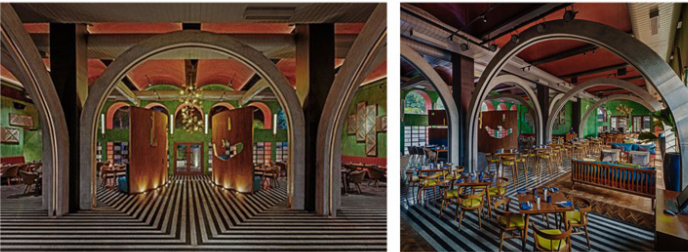


INTERIOR DESIGN:

ART DECO DETAILING: THE ART DECO STYLE IS VISIBLE IN CUSTOM-DESIGNED FURNITURE, BOLD GEOMETRIC PATTERNS, AND LIGHTING FIXTURES. THE SYMMETRY OF THE DESIGN, ALONG WITH THE STRONG LINES AND LUXURIOUS MATERIALS LIKE BRASS AND MARBLE, GIVE THE SPACE A REFINED, SOPHISTICATED FEEL.

COLOR SCHEME: THE COLOR PALETTE COMBINES RICH, DARK TONES WITH LIGHTER, NEUTRAL SHADES. DEEP BLUES, GREENS, AND GOLD ACCENTS ARE USED THROUGHOUT THE SPACE, CREATING A SENSE OF LUXURY WITHOUT OVERWHELMING THE SENSES. THESE COLORS CONTRAST WITH THE WHITE AND BEIGE WALLS, BALANCING THE COLONIAL ARCHITECTURE WITH MODERN SENSIBILITIES.

FURNISHINGS AND DECOR: THE FURNITURE IS A MIX OF CUSTOM-DESIGNED PIECES AND VINTAGE ELEMENTS, CREATING AN ECLECTIC YET COHESIVE LOOK. THE USE OF PLUSH VELVET UPHOLSTERY, LEATHER CHAIRS, AND PATTERNED TILES CREATES A TACTILE EXPERIENCE THAT COMPLEMENTS THE VISUAL ELEMENTS.



SECTION:



MAJOR PROJECT

PHYSICAL CASE STUDY



INTRODUCTION:

The Flying Dutchman in Noida, Sector 63 is a pirate-themed cafe and brewery with a variety of activities and offerings:
Theme: The Flying Dutchman is a 12,000 sq ft pirate-themed space with a ship-shaped exterior, skull wall, pirate murals, steering wheels, portholes, and lantern chandeliers.
Food & drink: The Flying Dutchman serves Indo-fusion and modern continental food, handcrafted drinks, and home-made booze.

PROJECT OVERVIEW:

- Name: The Flying Dutchman
- Location: 5th Floor, Logix City Centre Mall, Noida, Uttar Pradesh, India
- Type: Pirate-themed cafe and bar
- Area: Approximately 5,000 sq. ft.
- Completion Year: 2017

Design Firm:

- Name: Renesa Architecture Design Interiors
- Principal Architect: Sanchit Arora

PLAN:



DESIGN CONCEPT:

The Flying Dutchman's design is inspired by the mythical pirate ship. The architects aimed to create an immersive experience, transporting customers to a pirate's lair.



KEY DESIGN ELEMENTS:

1. Pirate Ship-inspired Facade: The exterior resembles a ship's hull, with wooden planks and rope details.
2. Entrance: Designed like a ship's gangway, leading customers into the pirate's lair.
3. Interior Layout: Multi-level seating, resembling a ship's deck, with cargo nets and lanterns.
4. Materials: Reclaimed wood, rope, metal, and glass.
5. Lighting: Warm, golden lighting, mimicking candlelight and lanterns.
6. Color Scheme: Earthy tones, blues, and whites, evoking a sense of the sea.



STAGE AREA



EXTERIOR FACADE

The cafe and bar's design is inspired by the legendary ghost ship, with elements like Polished Wood Accents and Nautical Colors throughout.

As you step inside, you'll notice Pirate-themed Decor, including giant steering wheels, portholes, and rope latticework, which adds to the overall ambiance.

The Open-Air Bar is a standout feature, with boats aligned vertically together for bottle storage and illuminated skulls adding a touch of spookiness.



BAR AMBIANCE



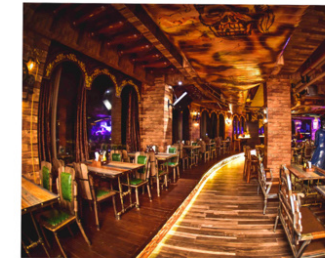
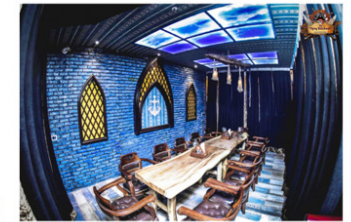
CEILING

SUSTAINABILITY FEATURES:

1. Reclaimed Materials: Wood and brick reused from old buildings.
2. Energy-Efficient Lighting: LED lights and sensors for optimal energy usage.
3. Water Conservation: Low-flow fixtures and greywater reuse.

CONCLUSION:

The Flying Dutchman's unique design creates an immersive experience, showcasing the architects' creativity and attention to detail. The project demonstrates successful integration of sustainability features, innovative design solutions, and clever use of materials.



PIRATE THEMED RESTAURANT



DESIGN ELEMENTS:

1. Weathered Wood: Reclaimed wood and distressed finishes evoke the worn hull of a pirate ship.
2. Nautical Details: Anchors, ropes, and pulleys integrate functional elements with pirate-themed decor.
3. Vintage Lighting: Lanterns, candles, and metal fixtures recreate the warm glow of a pirate's lair.
4. Curved Lines: Inspired by the shape of a ship's hull, curved lines and rounded corners create a sense of fluidity.

MATERIALS AND TEXTURES:

1. Reclaimed wood
2. Weathered stone
3. Rustic metal
4. Vintage nautical textiles



COLOR PALETTE:

Primary Colors:

1. Deep Sea Blue (#032B44) - Rich, navy blue evoking the ocean's depths.
2. Weathered Wood (#969696) - Distressed wood tone with a hint of gray.
3. Pirate's Gold (#FFD700) - Warm, sunny gold reminiscent of treasure.

Secondary Colors:

1. Seafoam Green (#B2E6CE) - Soft, calming green like ocean foam.
2. Rusty Anchor (#786C3B) - Earthy, reddish-brown like aged metal.
3. Sandy Beige (#F5F5DC) - Light, airy beige like beach sand.

Accent Colors:

1. Blood Red (#8B0A1A) - Deep, bold red for dramatic flair.
2. Minty Fresh (#ACFFAC) - Cool, refreshing green for contrast.
3. Vintage Map (#663300) - Warm, earthy brown like aged parchment.



TEXTURE AND PATTERN:

1. Wood grain textures for tables, walls, and decor.
2. Rope, netting, or fishnet patterns for added depth.
3. Vintage maps, treasure charts, or pirate flags as decorative elements.

Lighting:

1. Warm, golden lighting to mimic lanterns or candles.
2. Soft blue glow to evoke moonlight on the ocean.



KEY FEATURES:

1. Multi-level seating areas
2. Open kitchen with chef's table
3. Pirate-themed decor and artwork
4. Outdoor seating with nautical-themed landscaping



CONCEPTUAL IDEAS

INTRODUCTION:

The restaurant's design is conceived as a rustic, 18th-century pirate ship, with a weathered facade and curved lines evoking the hull of a vessel. The interior is organized into distinct zones, each reflecting an aspect of pirate life:

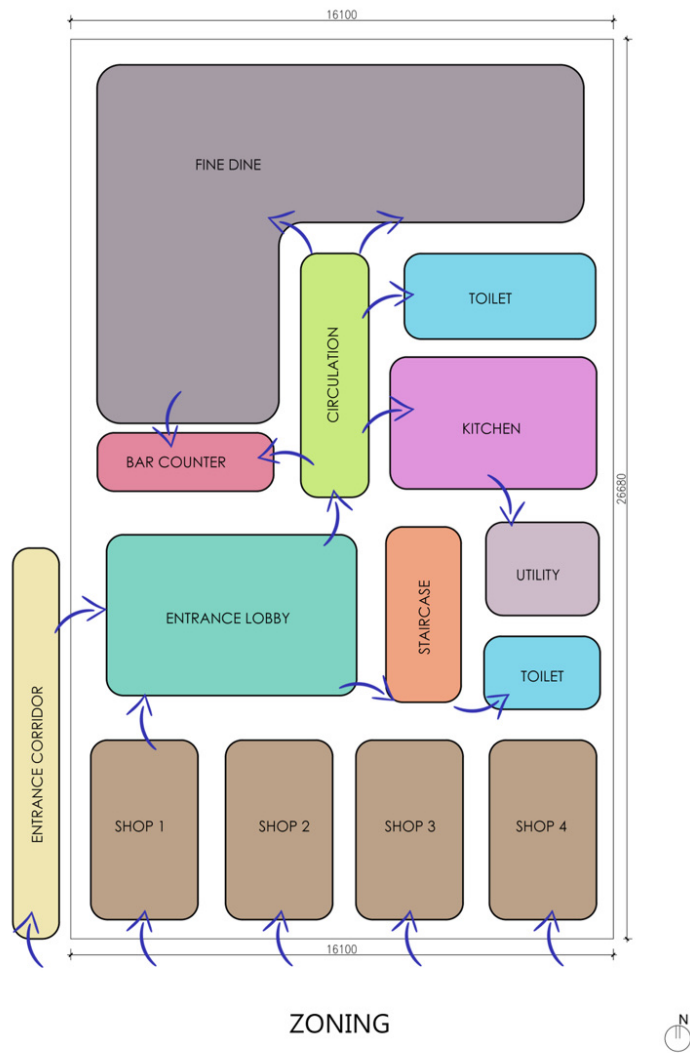
1. The Crow's Nest: Elevated seating area with panoramic views.
2. The Galley: Kitchen and dining area, reminiscent of a ship's galley.
3. The Treasure Room: Private dining area, adorned with vintage treasures.

This pirate-themed restaurant offers a unique dining experience, combining immersive storytelling with sustainable design and functionality.

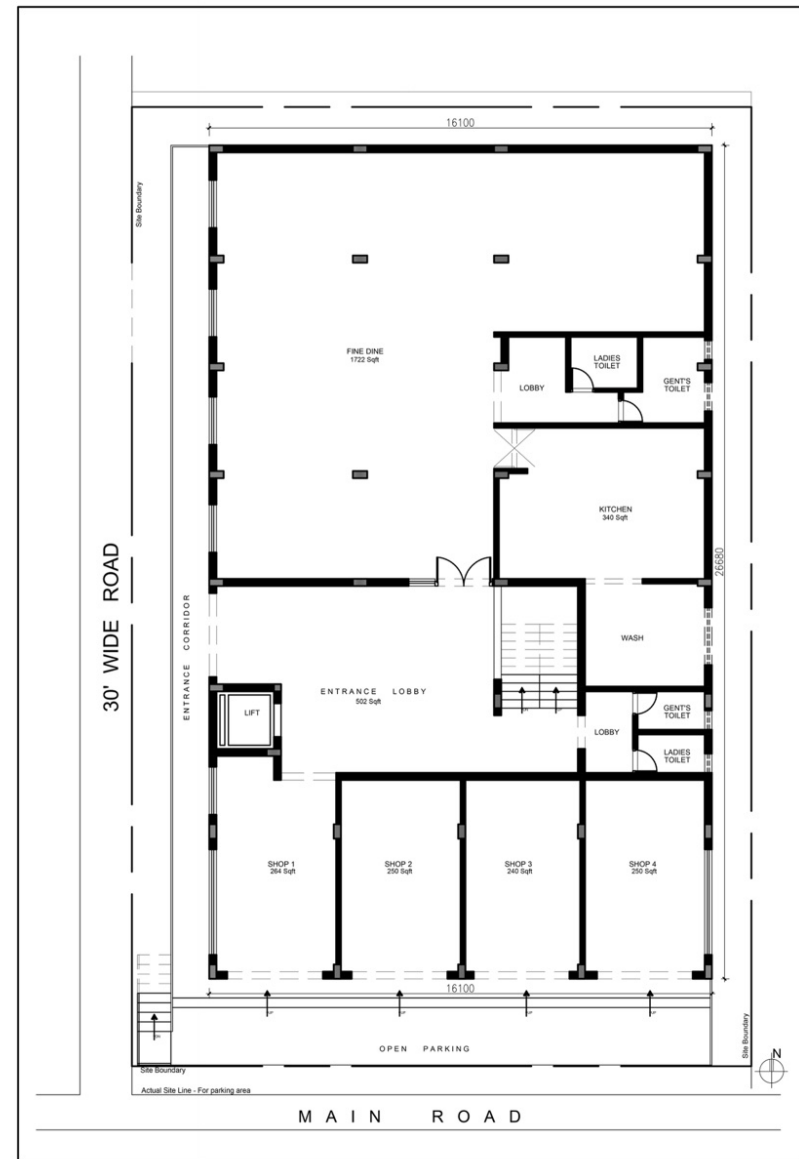


MAJOR PROJECT

ZONING & FLOOR PLAN - RESTAURANT



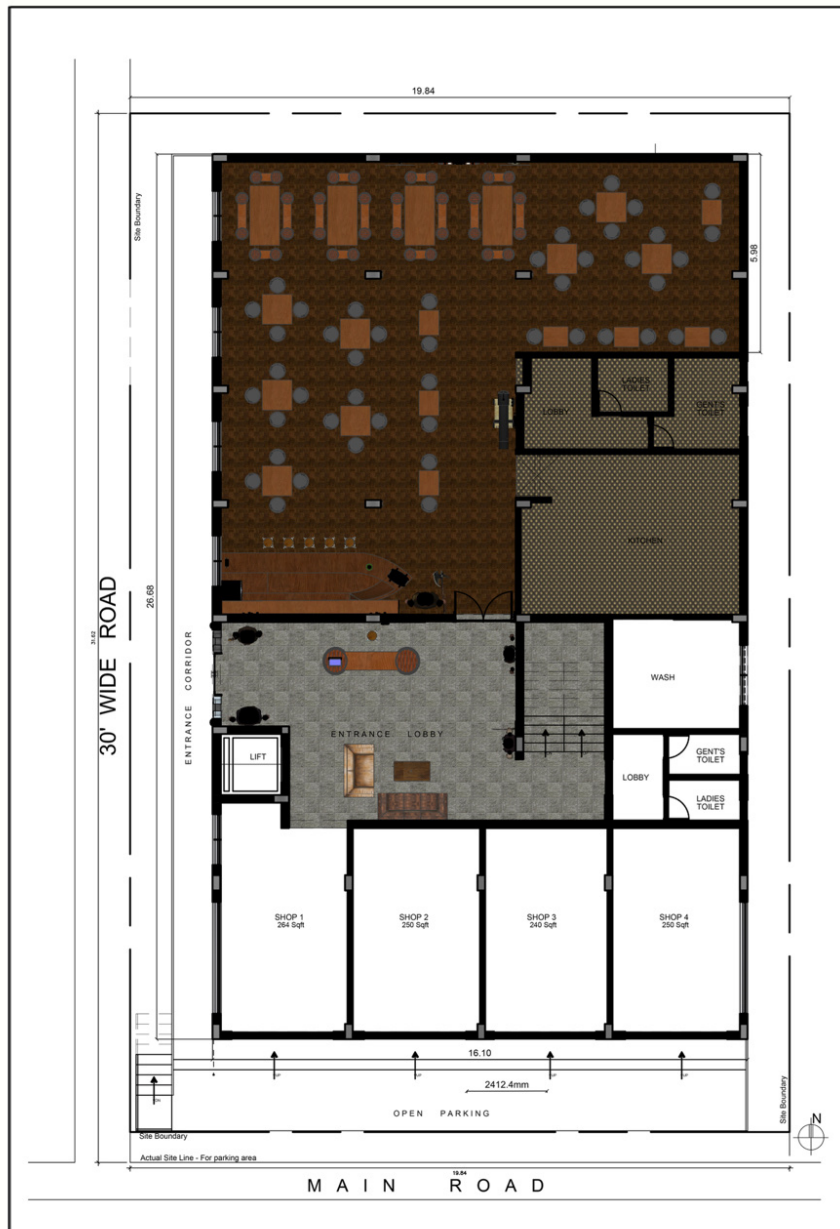
ZONING



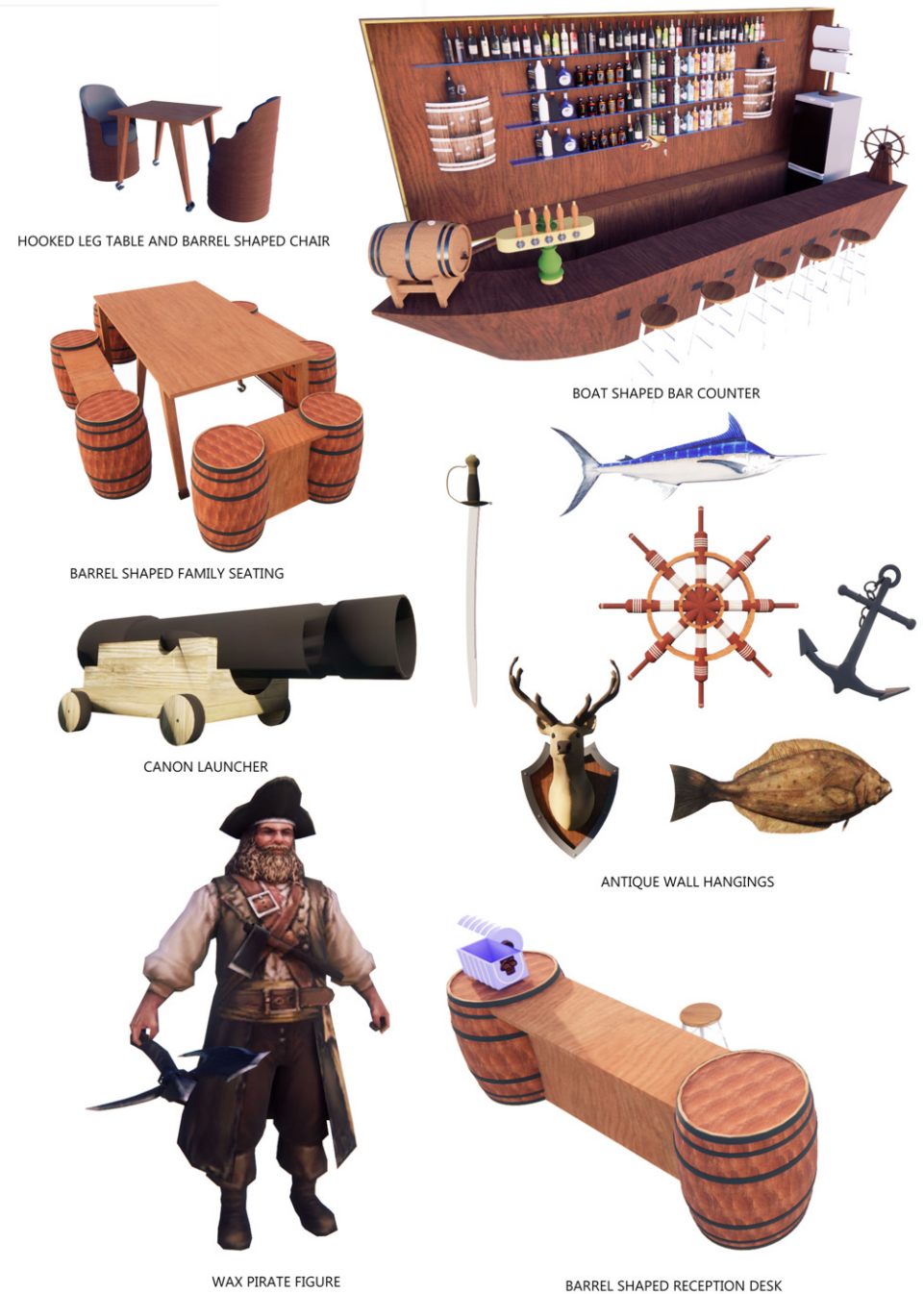
RESTAURANT FLOOR PLAN

MAJOR PROJECT

FURNITURE LAYOUT - RESTAURANT



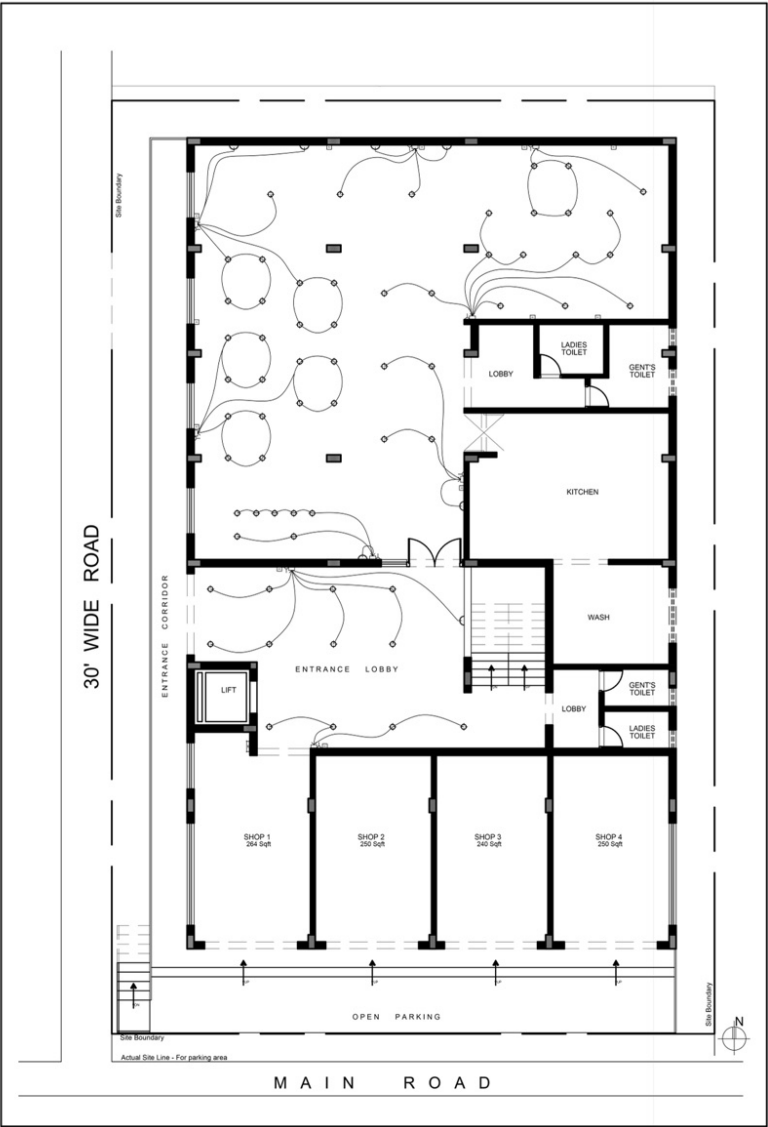
FURNITURE LAYOUT PLAN



FURNITURE INFO

MAJOR PROJECT

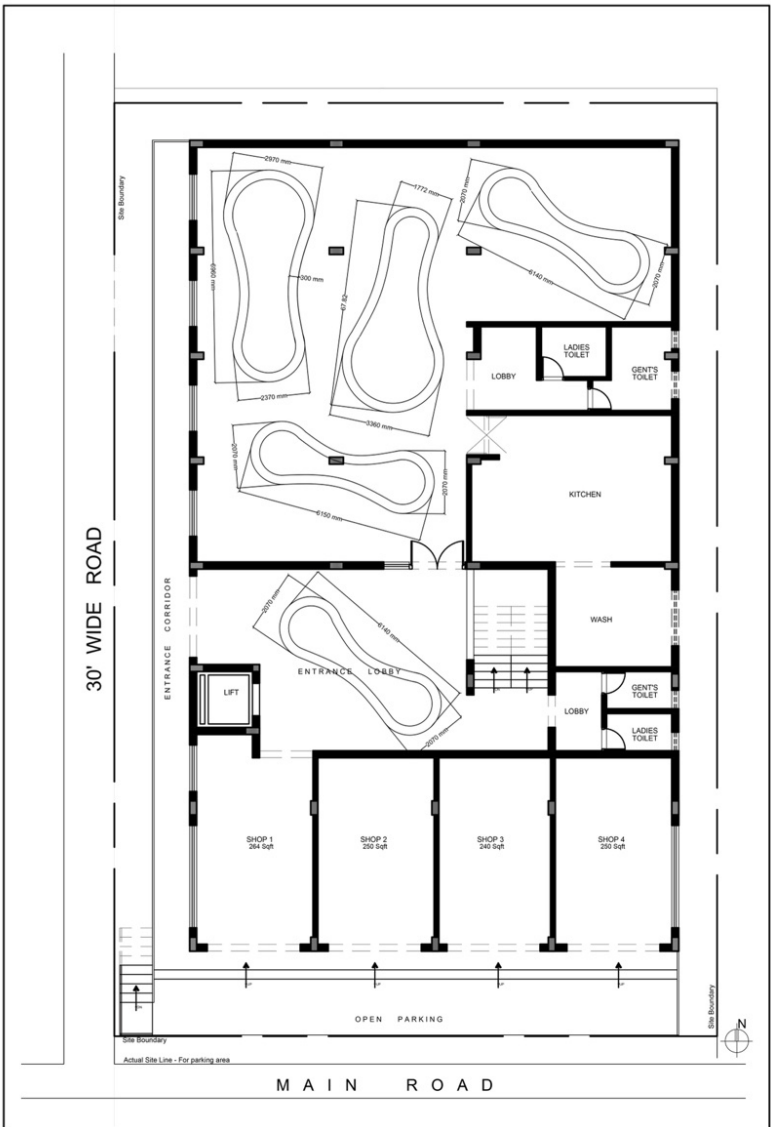
ELECTRICAL LAYOUT & FALSE CEILING PLAN - RESTAURANT



ELECTRICAL LAYOUT

LEGEND

SCHEMATIC	ELECTRICAL LAYOUT
WBS	WATER BOARD
SW	SWITCH BOARD
TS	TS AMP'S SWITCH BOARD
CL	CEILING LIGHT
FW	FAN
DR	DOOR BELL
TV	TV UNIT
AC	A/C UNIT
EF	EXHAUST FAN

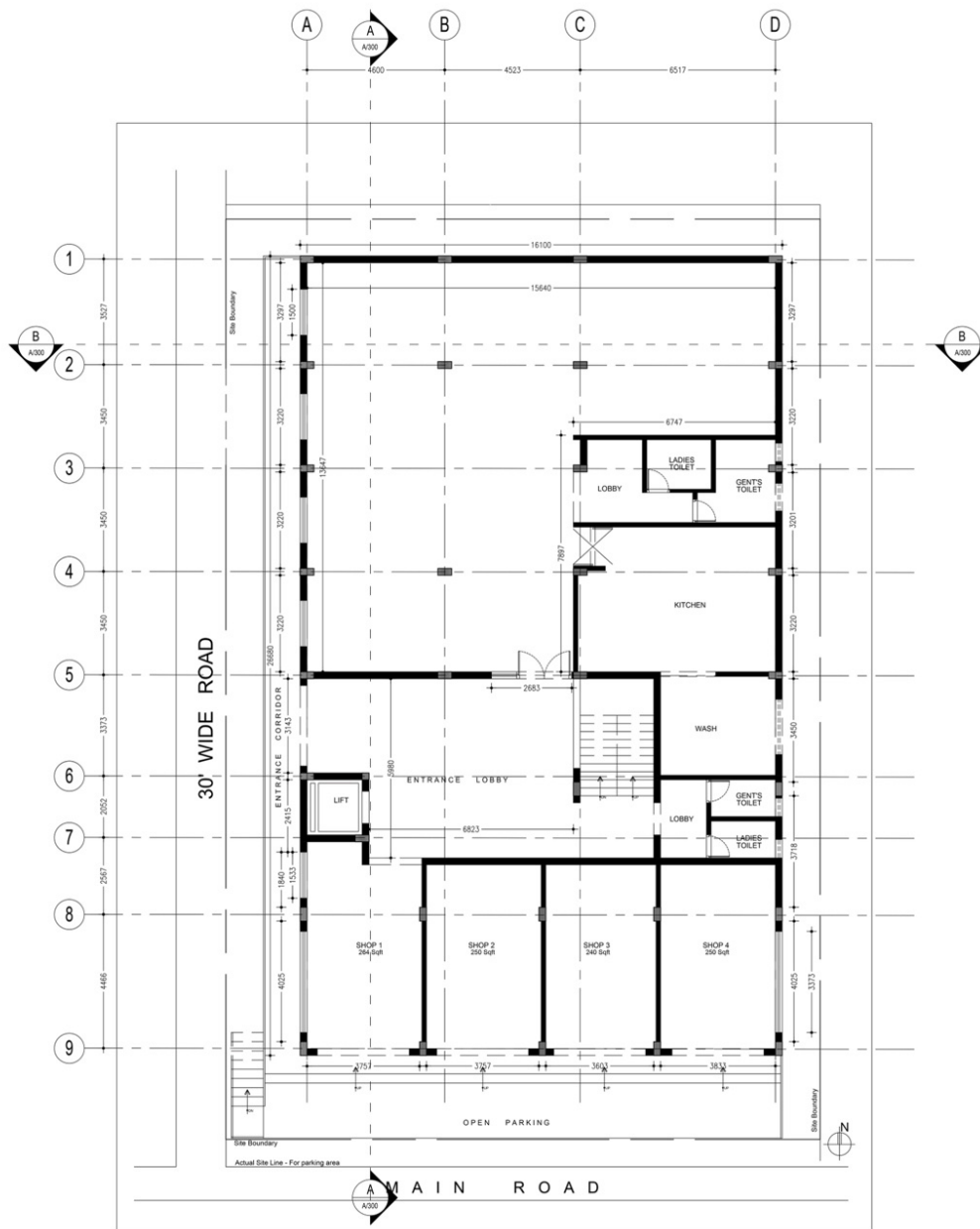


FALSE CEILING PLAN

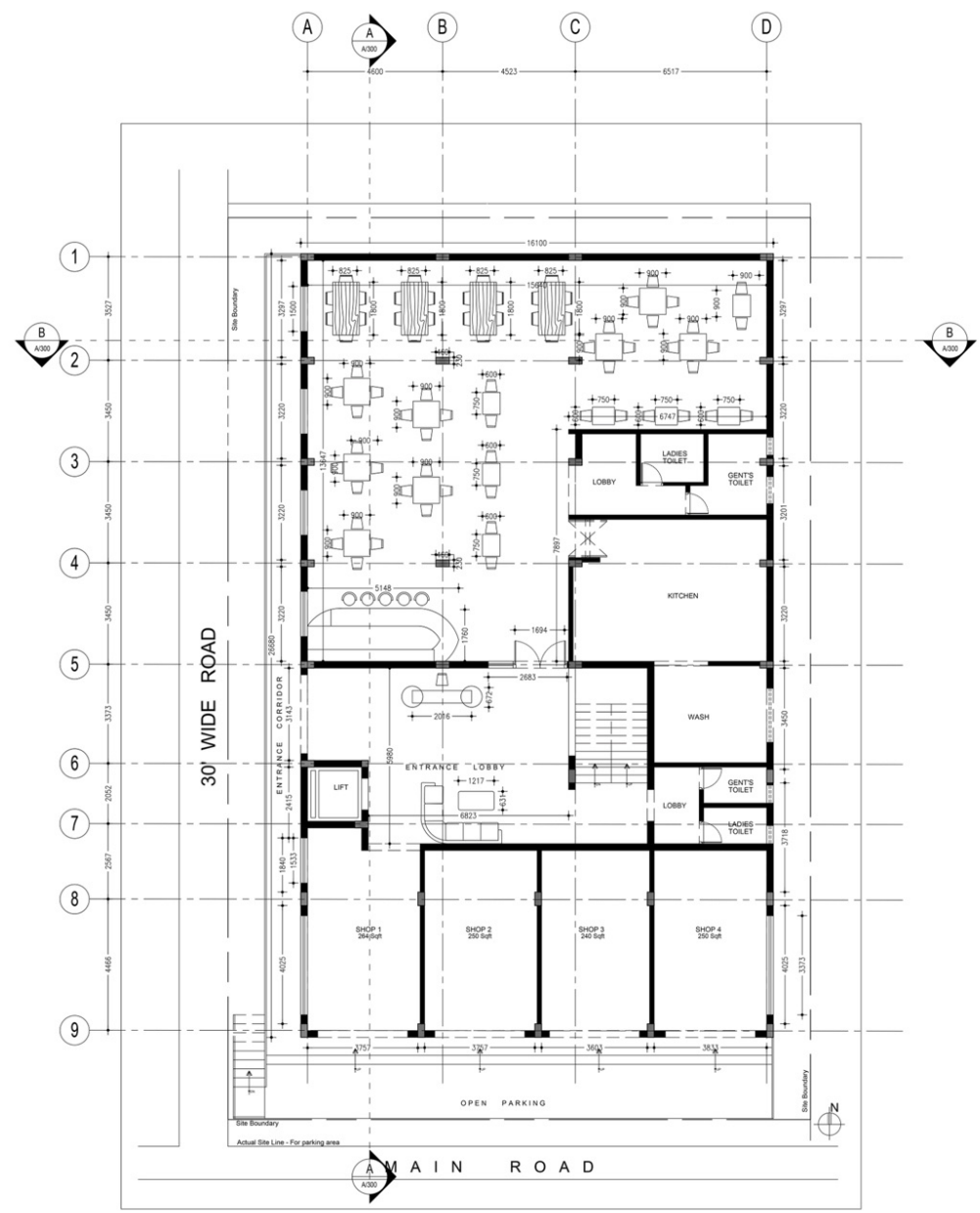


MAJOR PROJECT

WORKING DRAWING PLAN - RESTAURANT



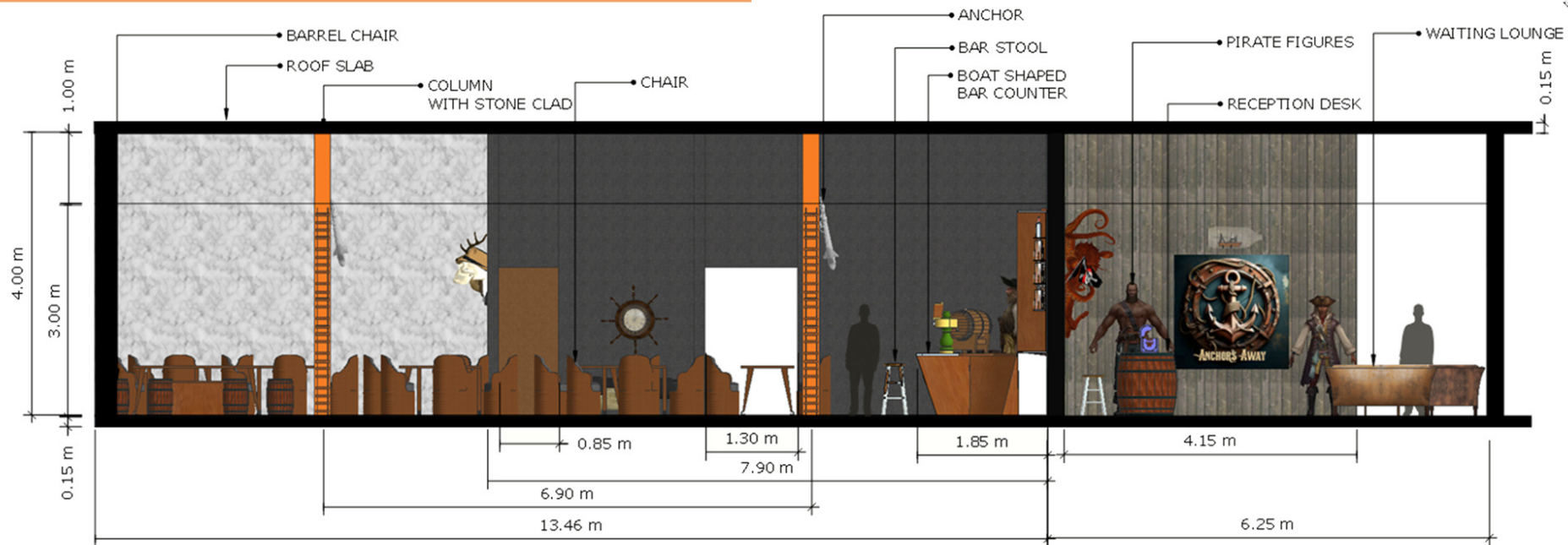
PLAN



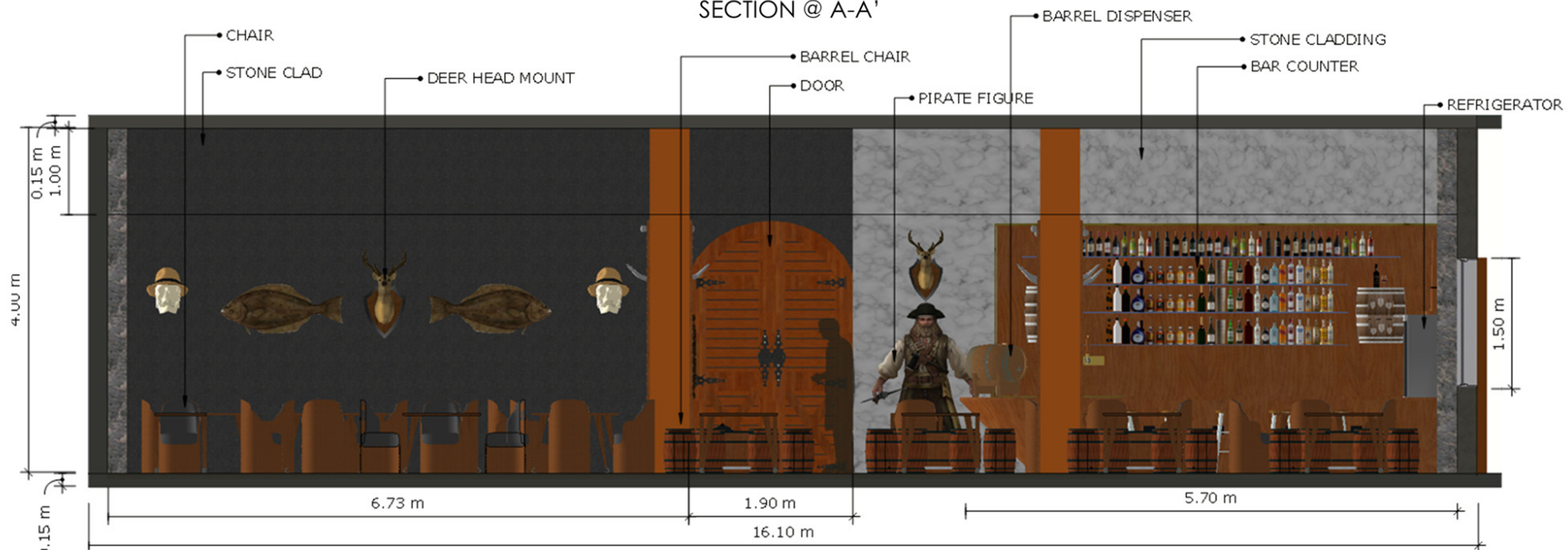
FURNITURE LAYOUT PLAN

MAJOR PROJECT

SECTIONAL ELEVATION - RESTAURANT



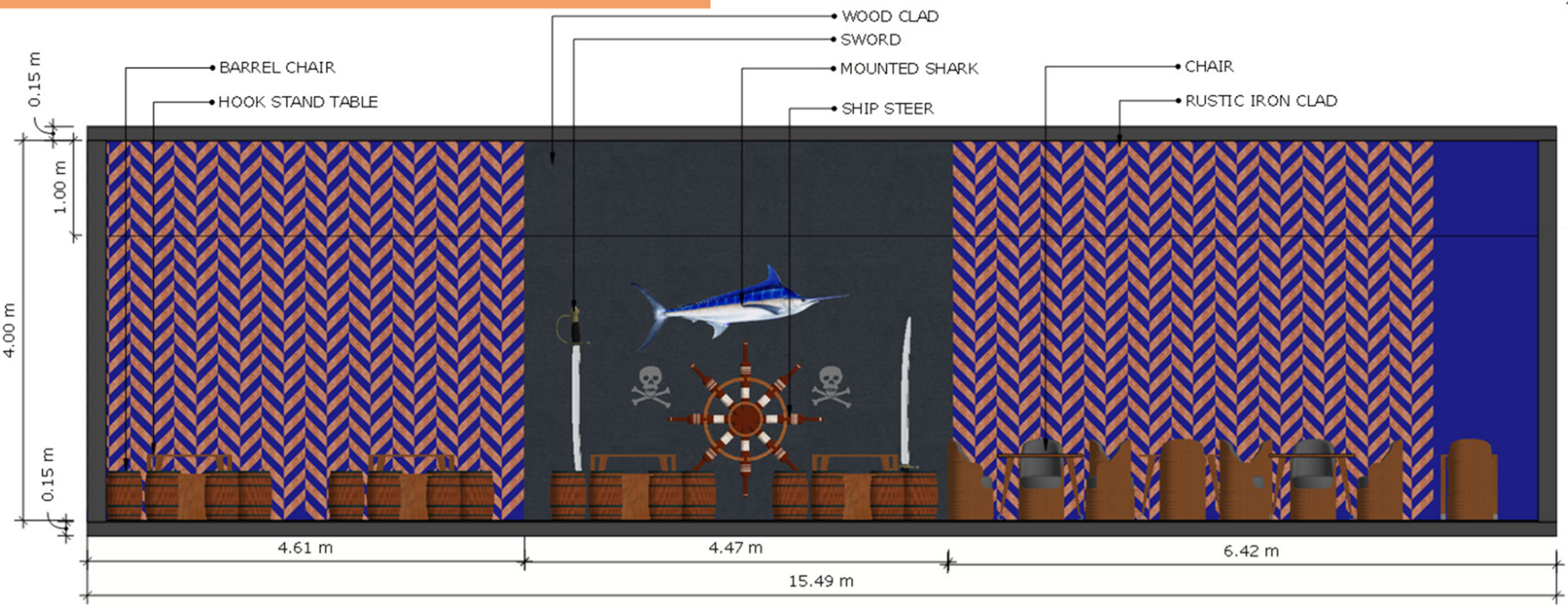
SECTION @ A-A'



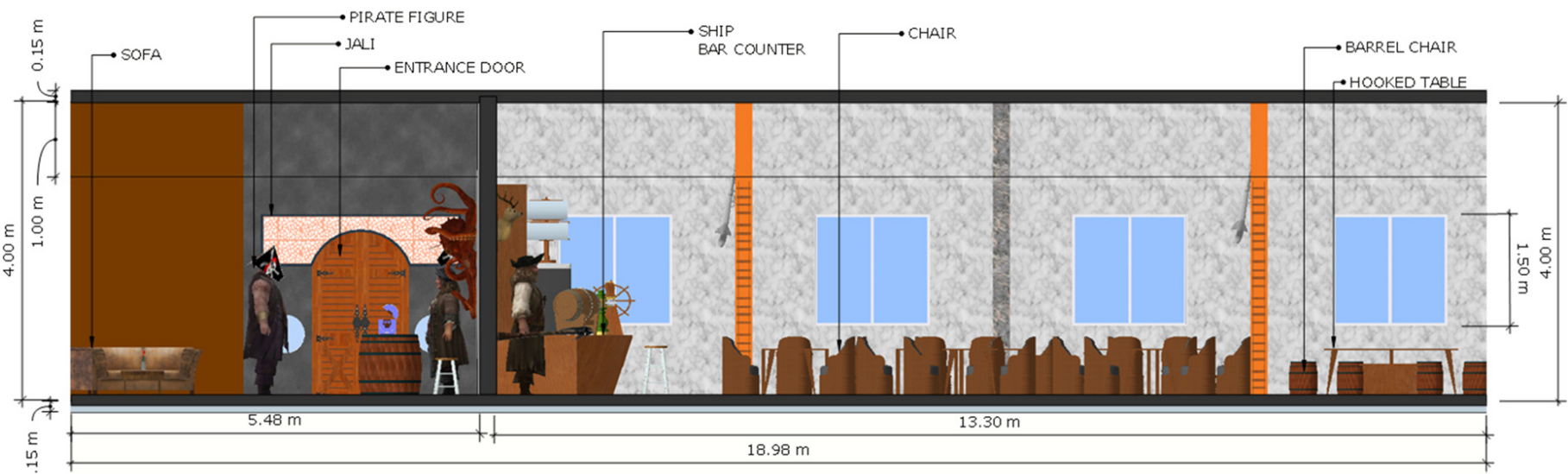
SECTION @ B-B'

MAJOR PROJECT

SECTIONAL ELEVATION - RESTAURANT



SECTION @ C-C'

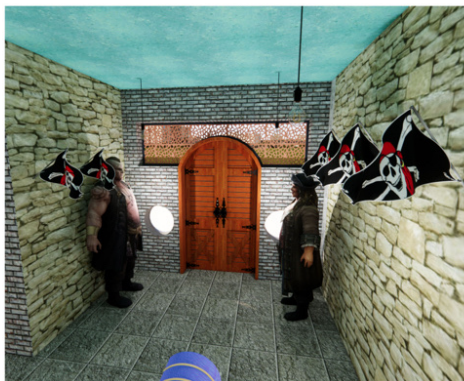


SECTION @ D-D'



MAJOR PROJECT

RESTAURANT RENDERED VIEWS



ENTRANCE LOBBY



RECEPTION & WAITING LOUNGE



SELFIE WALL



FINE DINE



WAITING LOUNGE



ANTIQUE DECORATIVES



BOAT SHAPED BAR COUNTER



BAR COUNTER VIEW



FINE DINE



FAMILY DINING



TWO SEATER DINING



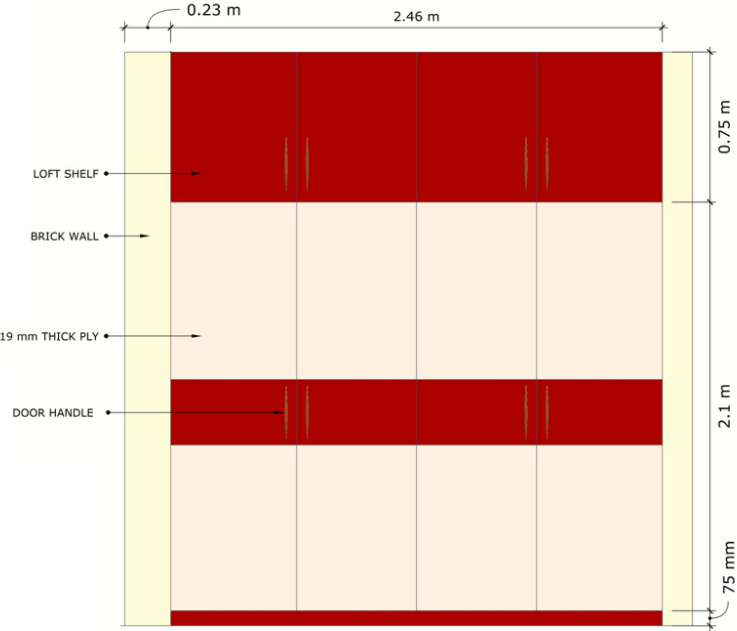
FINE DINE



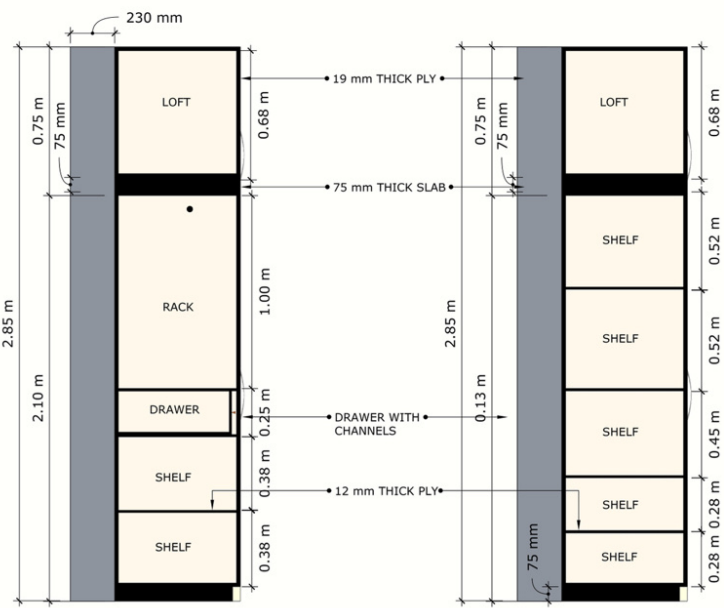
VIEW

MINOR PROJECT

WARDROBE DESIGN

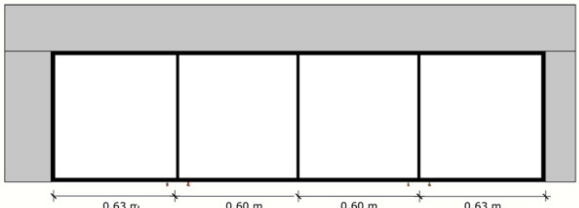


ELEVATION

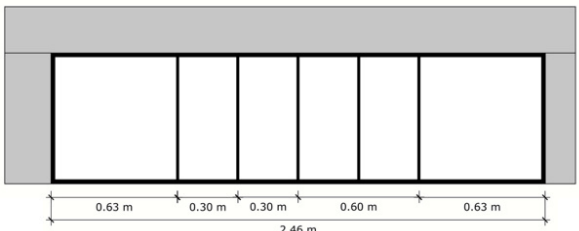


SECTION

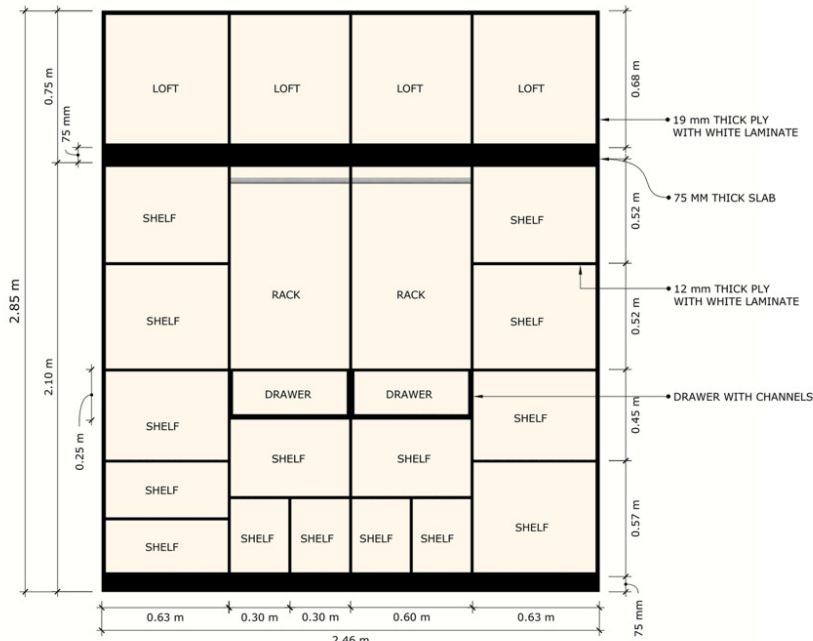
SECTION



PLAN ABOVE LINTEL



PLAN



SECTIONAL ELEVATION

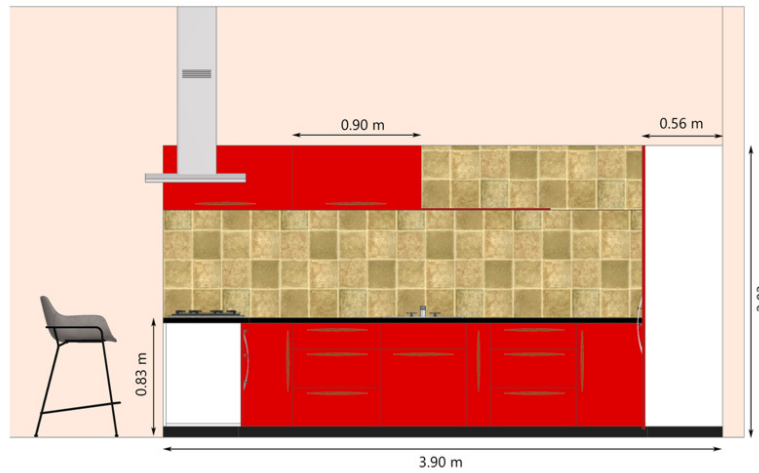
3D VIEWS



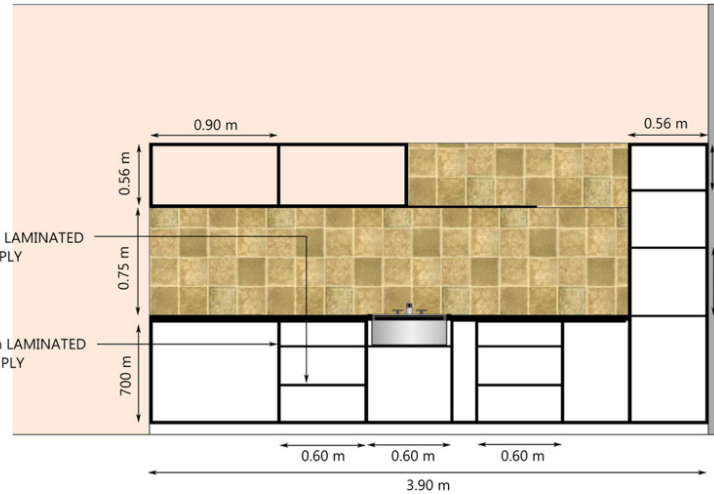
MINOR PROJECT

KITCHEN

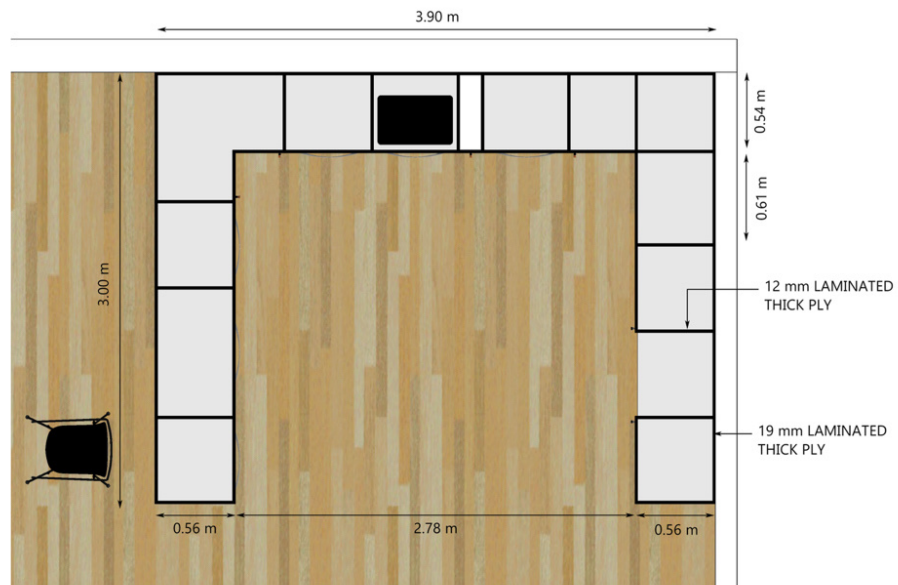
3D VIEWS



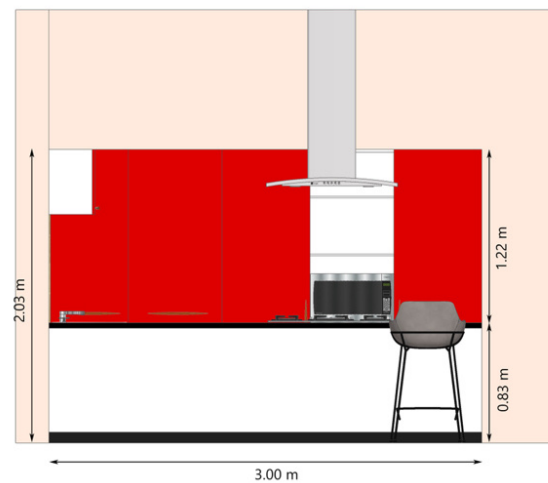
ELEVATION



SECTIONAL ELEVATION



PLAN



SIDE ELEVATION